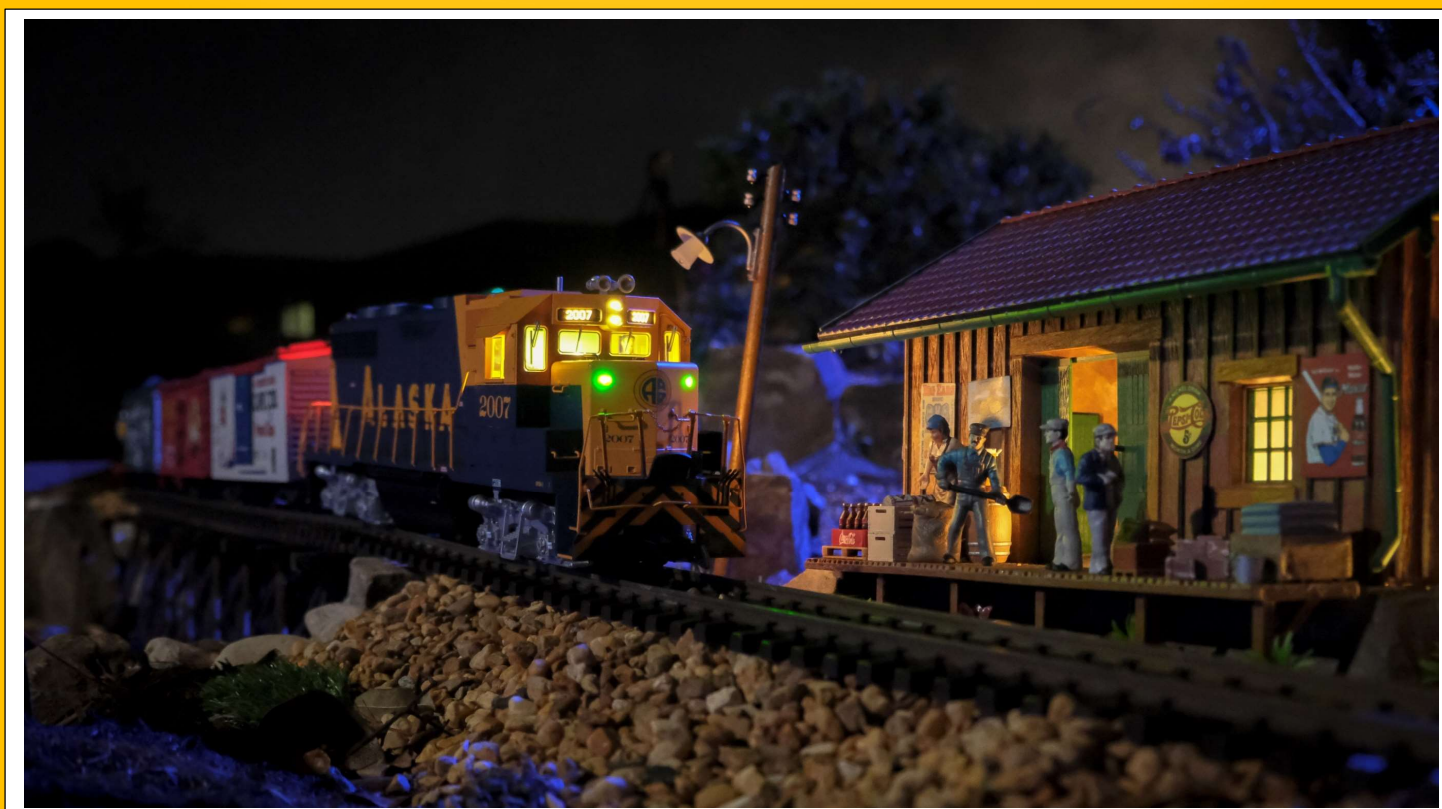




February 2024
NEWSLETTER



RealRail's 45th Annual Train Show is Coming!
February 17-18 – See Inside Page 7 For Details

Sharing the Joy of Garden Railroading Since 1990 !



PRESIDENT'S NOTES

From Fred Weber

February 2024

Here we are in February and the weather is finally getting a little better! Time to get ready for the train show in Palmetto on the 17 th . You never know what you're going to find at any of these shows. The club will be setting up both layouts at this event. Call Paul Wagner if you can help him. See "Events" page for details. The last Saturday of this month the club will be setting up both layouts at the Northeast Scottish Festival in Jacksonville. This is one event that is not all train related. If you have not been yet, it's a very interesting series of events. So come and help run trains for a few hours and then enjoy the festival's music, vendors, food, beer and Scottish games. When was the last time you saw someone throw a telephone pole wearing a kilt?

The Ohio plans are in the final stages. The stop at Entertrainment Junction before opening hours alone is worth the trip to Ohio! Plus, there are so many layouts to visit while we're there.

Those of you who enjoy working on buildings won't want to miss our upcoming contest. We have several buildings that need repair that we want to use on multiple layouts. The contest will be for the most original makeover and several other categories! So, get out your paints and creative ideas and let's get customizing!

Don't forget that LGB will again be at the Bushnell Station Museum for seminars and new product information on March 2 nd , 2024. Rumor has it that the new Amtrak train may be at the museum for this event. The Baggage Car has already arrived. So, mark your calendars for all these fun upcoming events.

Oh yeah, Happy Valentine's Day everyone!

Happy Railroading!

Fred Weber, **FGRS President 2024**

Cover Photo: An Alaska Railways night freight brakes as it approaches the station on Jared and Ally Sell's Garden Railway. See their story starting on Page 13. *Photo by Jared Sell*

Membership Renewal Made Easy!

You may have noticed an email in your inbox from: messenger@messaging.squareup.com

The Subject will have been: **“You have an invoice waiting (#000083)”**

Do not be alarmed! It is not a bill you have forgotten to pay, but it is a new system FGRS has adopted to make it easy for you to renew your membership at the beginning of the year!

When you open the email you will see this invitation to pay your dues online with a credit card. It is safe and secure - we are using the “Squareup” system that has been in use by many businesses and institutions for years. (<https://squareup.com/us/en>) When you open the email you will see:



When you hit the “Pay Invoice” button, it will take you to a personalized message from our Membership Chairman, Ray Lambert, inviting you to pay your dues with a credit card or other electronic means. Check to see that your name, address, phone number are all correct, enter your credit card information, hit “Pay Invoice”, and you will immediately receive an acknowledgement that it has been paid. You will receive a printable receipt in your email box, also from “messenger@messaging.squareup.com”.

Then you’re set for another great year of garden railroading with the Florida Garden Railway Society!

If you do not have a PC or don’t want to use your credit card, you can still pay with a check by mailing it to: **Florida Garden Railway Society (FGRS), Attn: Ray Lambert, Membership Chairman**
410 S Center Street, Eustis, FL 32726

Email or phone Ray with any questions about registration or paying your dues.
fgrs.membership1992@gmail.com, phone 954-551-3392

FGRS 2024 BOARD MEMBERS



FGRS President
Fred Weber
410-310-6001
Fgrs.president@gmail.com



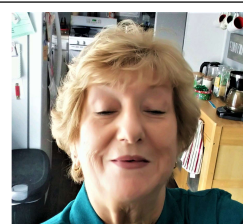
FGRS Vice President – Eastern Region
Phil Barcelona
386-562-4859
fgrs.vicepresident@gmail.com



FGRS Event Coordinator
Chip Danneker
214-543-5133
chipdanneker@gmail.com



FGRS Secretary
Millie Weber
941-224-2996
Fgrs.secretary@
gmail.com



FGRS Treasurer
Inga Thaw
352-341-7799
Thawwillie42@
gmail.com



FGRS Newsletter
Paul Wagner
941-445-0409
Fgrs.newsletter
@gmail.com



FGRS Membership
Ray Lambert
954-551-3392
fgrs.membership1992
@gmail.com



FGRS Board
Member at Large
Phil Rizzuto
845-590-1624
ptoytrains@aol.com



FGRS Board
Member at Large
Don Carter
352-207-5434
doncarter521@embarqmail.com

2024 TRAIN SHOWS AND SPECIAL EVENTS

February 10 - Woodland Scenics Seminar at Bushnell Station

Bushnell Station & Gulf Coast & Central Florida Train Museum

6470 West County Road 476, Bushnell, FL 33513

Andy Carroll will be holding a free seminar on the installation of Woodland Scenics static grass and ground coverings.

The museum is open every Saturday from 10am - 4pm. As you know, FGRS is deeply involved with the museum and has an outdoor G scale layout up and running. Feel free to bring your trains for a run. <https://bushnellstation.com/>

February 17-18, 2024- RealRail's 45th Annual Train Show

The Largest Train Show on the West Coast of Florida

10 AM – 4 PM Saturday; 10 AM – 3 PM on Sunday

Bradenton Area Convention Center, 1 Haben Blvd, Palmetto, Florida

FGRS will be setting up the large layout and the “Kid’s Zone” layout.

Setup time will be 12 NOON to 5 PM Friday.

Call Paul Wagner if you can help set up or operate our layouts and help sign up new members. 941-445-0409; email FGRS.Newsletter@gmail.com

Adult admission \$15 at the door - Pre-Register at

www.SunCoastTrainShow.com for \$12 online admission price

For more information go to: <https://realrail.org/upcoming-events/rail-pass/>

February 24 — Regal Railways Train Show - New Port Richey

Regal Railways will be holding a train show at the Elks Lodge located at 7201

Congress Street, New Port Richey 34653 on Saturday February 24 from 9:00 - 2:00.

Early bird hours are from 8:00 - 8:45. Admission is \$6 with kids under 12 free.

Lunch is available.

February 24 — NE Florida Scottish Games & Festival

Clay County Fairgrounds - 2463 State Road 16 West

Green Cove Springs, 32043 (just south of Jacksonville). The club

will have both the full layout and the kids display set up at the

event. Phone Fred Weber if you can come out and help with

setup and operation. 410-310-6001; email

Fgrs.president@gmail.com

Gates open at 8:30. Go to <https://www.neflgames.com/> for details.



(Train Shows and Events Continued Next Page)

(Train Shows and Events Continued from Previous Page)

March 2 - Marklin/LGB Seminars at Bushnell Station Open House

10:00am - 4:00pm

Bushnell Station & Gulf Coast & Central Florida Train Museum

6470 West County Road 476, Bushnell, FL 33513

Representatives from Marklin/LGB, including their DCC/Repair Services expert will be flying in from their North American Headquarters. The seminars will be conducted on all the Marklin/LGB new items for 2024.

Special museum open house pricing of \$6 will include all access to exhibits and the 1/2 mile train ride.

See Full Page Ad on Following Pages

March 9 – 10, 8 AM - 4 PM Marion County Master Gardner Show

Ocala Florida

Southeastern Livestock Pavilion in Ocala

2232 NE Jacksonville Rd, Ocala, FL 34470

Admission is \$3 and kids under 12 free. This is a great opportunity to see G scale trains and learn more about the gardening part of garden railroading. Board member Don Carter will be setting up both the large layout and his own kids layout.

If you can help with setup on Friday and tear down on Sunday, and help staffing the layouts during the show please contact Don Carter directly at 352-207-5434.

It's also a chance to get some great advice and know-how from one of the most knowledgeable garden railroaders in the State. (See Ad on following Pages)

March 16 - Regal Railways Train Show – Kissimmee

9:00 AM - 2:00 PM - Early bird hours are from 8:00 - 8:45

Columbia Club of Osceola

2000 Neptune Road, Kissimmee, FL 34744

Admission is \$6 with kids under 12 free, Early Bird admission - \$8. Lunch is available.

(Train Shows and Events Continued Next Page)

(Train Shows and Events Continued from Previous Page)

May 4 - Give Kids The World - Kissimmee

Give Kids The World has invited us to visit their resort located southeast of Disney off Hwy 192. Give Kids The World Village is a 89-acre, whimsical nonprofit resort for children with critical illnesses and their families. The resort's focus is to provide unique entertainment attractions, visits to nearby theme parks, and other fun activities for children of all abilities, including a G scale train layout! We last visited GKTW in September of 2021. For all who attended it was a memorable and moving experience. More details to follow.



2024 G-Scale Southern Regional Get-Together

Friday – August 23rd – Layout Tours

**Saturday – August 24th – Vendor Hall
The 65th Atlanta Model Train Show • Duluth, GA**

Sunday – August 25th – Layout Tours

**To be a vendor or exhibitor for the 1-day 65th Atlanta Model Train Show
contact Charlie Miller at rrshows@aol.com or 703-536-2954**

**Additional info coming soon to:
GGRS.info**

August 23 – 25, 2024 – G-Scale Southern Regional Get-Together, Atlanta Georgia

You may have heard that there will likely not be a National Garden Railway Convention in 2024, so the Georgia Garden Railway Society has teamed up with Charlie Miller of Golden Spike Enterprises (the force behind many of the train shows here in Florida) and will present a convention in the Atlanta area.

September 12 - 15 – FGRS Ohio Adventure Trip - Columbus, OH

An FGRS Club trip is planned for this coming September. Information Flyer is on following pages of this Newsletter. Registration will begin later this month. A splendid time is guaranteed for all! We hope you can make it.

Visit Bushnell Station every Saturday from 10am - 4pm

In addition to the special LGB Open House, as always, you can get your train fix by visiting Bushnell Station every Saturday as well as a RR work day on Wednesdays. AKA "The Gulf Coast and Central Florida Railroad Museum", it is located at 6470 County Road 476 West, Bushnell, FL 33513 <https://bushnellstation.com/>
For a list of many other Train Shows go to http://www.railserve.com/events/train_shows.html

The Largest Train Show on the West Coast of Florida!!!

RealRail's 45th Annual Train Show

February 17-18, 2024

Saturday 10 AM - 4 PM, Sunday 10 AM - 3 PM

Bradenton Area Convention Center,

1 Haben Blvd, Palmetto, Florida

- **Interactive LIONEL layout**
- **Greater Florida Lego Users Group layout**
- **FGRS Kid's Zone Layout**
- **Food Truck Will Be Available**

And -

Florida Garden Railway Society's Huge Layout!

Featuring sceniced modules with complete operating block signal system, crossing signals, and stop lights!



Adult admission \$15 at the door

Pre-Register Online price is \$12.00, available at:

www.SunCoastTrainShow.com

Kids 12 and under free with paid adult

Call Paul Wagner if you can help with the FGRS Exhibit 941-445-0409

LGB / MARKLIN Open House

WHEN

**Saturday, March 2, 2024
10 am – 4 pm**

WHERE

Bushnell Station

6470 West CR 476, Bushnell, Florida 33513

**FEATURING · Marklin & LGB Seminars on
DCC Operations and New Item Releases**

LGB

Marklin & Trix

MiniTrix

Marklin

G scale trains

H0 scale trains

N scale trains

Z scale trains

**Presented by: Gale Cousins – General Manager of
North America Operations for LGB / Marklin
Stacy Cousins – Marketing and Club Membership
& Rick Sinclair - Digital Specialist for Marklin / LGB**

PHONE: 352.901.0829

Website: www.BushnellStation.com

SPECIAL OPEN HOUSE PRICING

**\$6.00 for everyone
Under age 4 - Free**

INCLUDED

All Access Pass to:

All Seminars

Museum

Terminal A - Exhibits

Terminal B - Exhibits

Train Ride – ½ mile

HIGHLIGHTS

**LGB Museum – 1000 cars
and engines on display**

G Scale Garden Railroad

(Florida Garden RR Society)

G Scale Exhibit Hall

O Scale Exhibit

O Scale Switching Layout

On30 “Muskrat Ramble”

N Scale Layout

S Scale Layout

H0 Scale Layout

****Used items for sale by
train clubs throughout
the state**

BENEFITING

**The Gulf Coast and Central
Florida Railroad Museum Inc.
A 501 (c)(3) non-profit
corporation**

Marion County  Master Gardeners'

Spring festival

Always the 2nd weekend in March!

March 9th & 10th 2024

**\$3 admission,
tax included
(12 & under
free)**

**Bring your
own
Wagon**

- **Florida Friendly and tropical, trees, shrubs, flowers, vegetables, and herbs.**
- **Educational Seminars**
- **Garden Décor**
- **Food trucks**
- **Mobile Plant Clinic**
- **KIDZONE featuring butterfly tent**
- **Featuring certified vendors**
- **No pets allowed; service animals permitted**

**March 9th
8am to 4pm
&
March 10th
9am to 4pm**

**Southeastern Livestock Pavilion
2232 NE Jacksonville Rd
Ocala FL 34470
For more information:**



UF IFAS Extension
UNIVERSITY of FLORIDA



**Florida-Friendly
Landscaping™** PROGRAM 



An Equal Opportunity Institution. UF/IFAS Extension, University of Florida, Institute of Food and Agricultural Sciences, Andie Johnson, Dean and Director. Single copies of UF/IFAS Extension publications (excluding 4-H and youth publications) are available free to Florida residents from county UF/IFAS Extension offices.

sfyl.ifas.ufl.edu

FGRS FALL OHIO ADVENTURE

All aboard for a fantastic opportunity to join your Florida Garden Railway Society friends this coming September on a trip to Ohio to experience area attractions, multiple layouts, and learn more about garden railroading



Come and join us this September for a memorable journey to the Buckeye State. Members will caravan in their own vehicles from Florida to Ohio to visit EnterTRAINment Junction in Cincinnati and over a dozen layouts in the Columbus area. Columbus is just two hours south of Cleveland. So you may want to add on a visit to Cuyahoga Valley with its scenic train ride throughout the park and the Rock & Roll Hall of Fame. The four day trip will depart on Thursday September 5th and culminate on Sunday September 8th when the group will tour numerous layouts hosted by the Columbus Garden Railway Society. On the way we'll have opportunities to meet up with the Georgia Garden Railway Society in North Georgia, ride the rails at Rail Explorers in Versailles, KY, and visit Me Love trains in Dublin, GA. Cost is \$75 per person which covers early entry, full access and a VIP tour at EnterTRAINment Junction along with a group luncheon on Saturday. Also the group dinner on Sunday is included. When we determine the size of the group the FGRS will investigate discounted hotel blocks in Georgia, Cincinnati, & Columbus.



Registration will commence in early February

Itinerary

DAY 1 & 2 - SEPT 5 & 6: TRAVEL TO OHIO

On Thursday September 5th the group will depart in their own vehicles from Central Florida and head north via I-75 toward Marietta Georgia (about 7 hours). We'll meet members of the Georgia Garden Railway Society for dinner. On Friday we'll head to Cincinnati (another 7 hour trip). On the way there's a great opportunity for an optional visit to Railway Explorers in Versailles, KY. <https://www.railexplorers.net/tours/bluegrass>



A caravan to Ohio. What better way to make new friends!



Ride the rails in Kentucky on the way to Ohio!

DAY 3 SEPT 7: ENTERTRAINMENT JUNCTION

After spending the night in Cincinnati we'll head over to EnterTRAINment Junction <https://entertrainmentjunction.com/>. The local attraction, boasting the largest train display in the world, is renowned for its 25,000 square feet of interactive layouts containing ninety g-scale trains. Your registration fee will cover early entry privileges and a group VIP tour as well as a group luncheon. After lunch we'll head off to Columbus (about a 2 hour drive). Dinner is on your own.



Over two miles of track on a journey through distinct times in US history



Enjoy a group luncheon at EnterTRAINment Junction

DAY 4 SEPT 8: CGRS LAYOUT TOURS

On Sunday the group will tour Columbus Garden Railway Society layouts throughout the Columbus area. More than a dozen CGRS members participate in this annual event. The busy day will culminate with the group dinner covered in the registration fee. On Monday you can head home or go north to Cleveland and enjoy Cuyahoga Falls and/or The Rock & Roll Hall of Fame.



The annual CGRS event attracts visitors far and wide



Some of the best layouts in Ohio will be highlighted

2024 FUN RUNS

April 6th, 2024 - Plans are under development for a multi-site Fun Run in the Davenport & Kissimmee Area

Several members have already agreed to participate. If anyone else in this general area would like to show off their layout that day please let me know. We'd like to get at least one or two more participants.

May 19, 2024 - Fun Run at the home of Charlie Beall

Noon – 4PM

7839 Sloewood Dr Mount Dora, FL

Phone 352-383-3976

Always an enjoyable day at a spectacular Garden Railway layout! Bring chairs and a picnic lunch, and a train to run.

Charlie will provide soft drinks and water. The layout is roughly 70 feet x 90 feet. It is currently being downsized, but will still have two mainlines. It was built in 2006 and has been featured in Garden Railways magazine. There is a waterfall, koi pond, long truss bridges, and a varied, beautifully landscaped terrain throughout the layout. Charlie has 20 locomotives and 111 cars.



Charlie is downsizing his layout and will have a sale of his surplus track at this meet.

If you are interested in hosting a Fun Run contact:

Chip Danneker – FGRS Event Chairman

chipdanneker@gmail.com 214-543-5133

Member Spotlight

New Members - Jared and Ally Sell

Davenport, Florida

Photos by Jared Sell

Here is our story, where it started, how it's going, and where it will go!

My name is Jared Sell and this is my 27th year garden railroading! It all started in my parent's front yard (Framingham, MA) at age 7 with a Playmobil and a Bachman Big Hauler set, some LGB tracks, and lots of little critters.

At that same age, I started exhibiting in the New England Spring Flower Show, focusing on plant specimens exhibits. Fast forward to age 16, and the show management approached me about creating an exhibit for children. Knowing my love for garden railroads, I knew it had to be shared with the public. So with the addition of a 44-



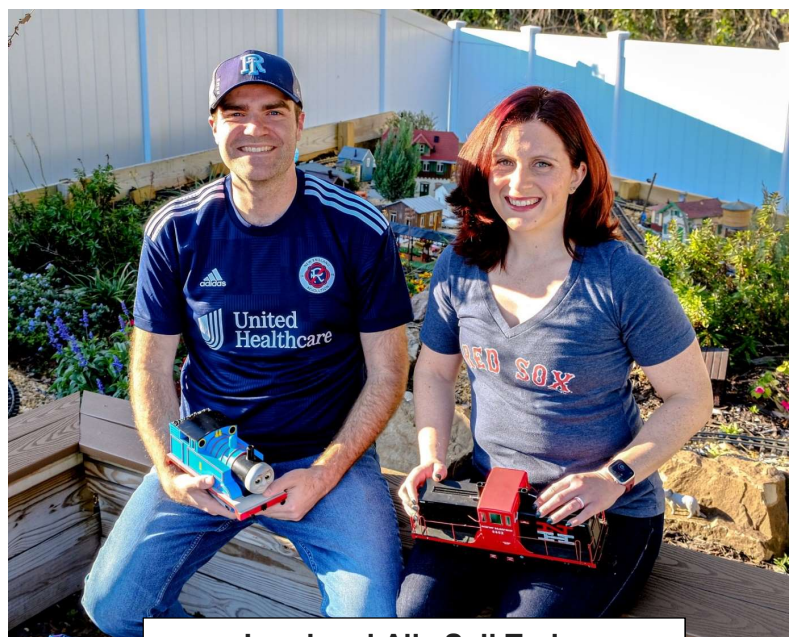
It was built in three phases over a 14 month period. The layout features 170 feet of track

tonner set from USA Trains, we were off to the races with a 160 square foot, 3' high, 360 exhibit. I was lucky enough to continue growing these exhibits for a few years, ending with a 750 square foot, walk through backyard exhibit. After the final program, the trains went into storage for 14 years, at which point they made the journey from Boston to Davenport, Florida. Now having a house, it was time to start a new layout!

The garden here in Davenport is 450 square feet.

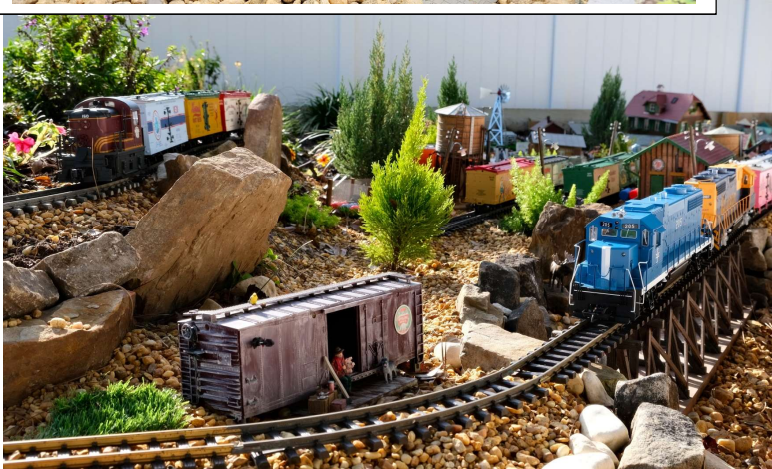


Roo and Kermit are the yard supervisors.



Jared and Ally Sell Today

over three circuits. The collection has grown quite a bit since the little Jared days. The rolling stock is a nod to my nostalgic childhood with food, candy and drink. The engines are made up of Boston & Maine, New Haven, and Alaska; a piece of home mixed with the favorite vacation spot of my wife Ally and me. Lastly, over 25 custom assembled/detailed buildings make up the village and railyard. There are many nods to family, local Florida attractions, and even the ice cream shop that Ally and I would frequent when we started dating.



What's next? Well, if you ask my father, another 150 square feet! My goal for the next year is to focus on expanding the smallest circuit to be 2-3x larger by weaving it through the existing garden and connecting to the rear of the village. I'd also like to create steps down the hill and build in lighting for the patio.

I look forward to meeting all of you at one of the next meetups or maybe even a fun run in Davenport! I'd love to do a fun run. I have a smaller layout, so hopefully someone else in the area would partner with me so that there could be a double that day. Make the trip worthwhile!

Best - Jared & Ally

Product News

February 2024

You can download an LGB catalog of LGB's *New Items* at <https://www.lgb.com/products/product-information/catalogs/new-items> or pick up a printed copy at Bushnell Station, our LGB dealer. The President of Bushnell Station, Craig Hurst, tells us that he is stocking some new products from LGB, including the Amtrak baggage car.

There are NO SHIPPING CHARGES when the item is picked up at Bushnell Station

You can get a complete LGB catalog when you drop into the Bushnell Station hobby shop when you come out to run trains on our layout, ride the train, and visit the museum exhibits there.

Gulf Coast and Central Florida Railroad Museum at "Bushnell Station" is at 6470 WC 476 (County Road 476 West), Bushnell, FL 33513

Phone: 352.901.0829

Cell/Text: 352.250.0905

Email: BushnellStation@gmail.com

Website: www.BushnellStation.com

Piko-America has new items available. Their complete website is at:

<https://www.piko-america.com/pages/g-scale>

Fred Weber has 2024 Piko catalogs. Contact Fred at 410-310-6001 if you would like to arrange to pick one up. Catalogs and tech info are also available online for free download.

Split Jaw Products continues to concentrate on rail clamps, bridges, turntables, track products, and new developments. They introduced 3 new bridges; Deluxe Pratt Truss, and massive 6ft Double Arch trusses in Single and Double track. Info is on our website. Here is a link: <https://www.railclamp.com/shop-bridge-collection> There is an upgrade to the Auto-Reversing Shuttle controller, adding an easier way to adjust the stop pause time, and an **optional intermediate stop** for customers with longer (min 20ft) runs. The HR stainless steel track line is in full production, and turnouts will be added to the line soon. They also carry a line of custom and rare large scale trains in their "Custom Shop" department. Split Jaw Products can be purchased at Bushnell Station. Look for an announcement of new Split Jaw products over the next months on their website where you can sign up for emailed product announcements and special deals.

<https://www.railclamp.com/>

Bachmann Trains is now shipping the Dash 9 Diesel Locomotives in a variety of road names. They are also shipping parts for this locomotive which should be interchangeable for the similar unit previously produced by Aristocraft. Star Hobbies and others are stocking these.

https://shop.bachmanntrains.com/index.php?main_page=index&cPath=255

USA Trains is now shipping the 4-8-4 FEF-3 Locomotive with Sound, and some new Christmas decorated cars

<https://www.usatrains.com/>

LGB Box Colors – Explanation

Submitted by Craig Hurst

Based On an article posted on “Caboosenet”

Advertisements for older LGB equipment is often accompanied by cryptic references to the older packaging. I will attempt to provide details surrounding the earlier packaging and labeling, and its evolution to today's product.

1968

In the beginning there was a gray box. It was adorned with the LGB Plaque Logo in red, and green line drawings of different LGB products, a great idea for spicing up an otherwise rather drab presentation. The gray box was a rather simple affair, just heavy card stock folded at the ends and stapled.

1971

In 1971 the original gray box [Gray Box] was replaced by a bright yellow one [Yellow Box] with red and white logos and retaining the green line drawings. The bright yellow boxes were used until 1977 when the red box was introduced. These new early red (bright or caboose-red) boxes [ERB] used green and yellow logos with white train line drawings.

1977

These folded cardboard boxes, often called "shoeboxes", were used until the late 1970s. At some point in this initial ten year period, Lehmann began to ship a heavy cardboard coupler protector with the cars. This was a folded and stapled square, about 1x1.5" and 1" deep that was slipped over the hook coupler to protect the coupler from damage in shipping. While cars of 300mm size and larger received new packaging in the early 1980s, the basic folded and stapled box with coupler protector is still used for short cars, flat cars and boxed accessories.

1983

Early in 1983, the dark red corrugated box [LRWB - Later Red Window Box] was introduced with a large rectangular display window for rolling stock. The LGB Logo under the window was retained, but the box ends now carry both the LGB and Lehmann logos. This dark (almost cranberry or maroon) red is quite different from the earlier box in that the heavier corrugated construction was combined with a heavier cardboard insert to secure the car in transit. . This packaging provides a very attractive in-box display as well as more protection than either the earlier light-weight window box, or the folded and stapled cardboard box. Staple scratches and rubbed-off paint became a thing of the past. In addition, these boxes are shipped with a plain gray unlettered sleeve which assures that even the box will arrive in pristine condition. While the presence of an LRWB will definitely date a car as being produced in 1983 or later, it does not necessarily follow that a car with red folded cardstock box was produced prior to 1983.



1993

In 1993, the product numbering was changed to the five digit system. The final step in the evolution of the product label coincides with the logo change on the box end to the white Circle Logo in 1995. The "notch" in the upper green label field was removed, and the bar code was centered at the top of the white field.

Member Train Items For Sale

Looking to buy or swap something? Send in
your request- FGRS.Newsletter@gmail.com

This page has been created solely as a convenience to our members who want to buy and sell from other club members. FGRS takes no responsibility for the condition of the items or sale of items. Any transaction is completely between the buyer and seller.

Please submit items you would like to buy or sell to Paul Wagner, FGRS.Newsletter@gmail.com

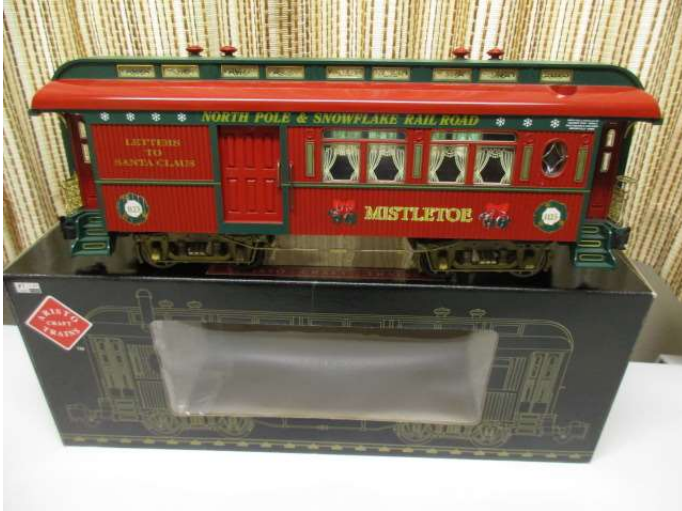
Ads will be run for 2 months if they are not renewed. Please notify me when an item is sold, so it can be removed from the following newsletter. – Paul Wagner

Bruce Benardo in Englewood, Florida has two Christmas train sets for sale:

I have the following Christmas train sets for sale. Both are in like new condition with very little run time and all have been updated to steel wheelsets. All have Aristo Knuckle couplers.

The first set is a Aristocraft #31025-3 Sierra Style Passenger Car set consisting of 1-combine,1-coach, and 1-observation, all lighted and have been converted to solid axle steel wheelsets , No more plastic sleeves to crack and fall apart.

Beautiful Artwork & Trim. The set retailed for \$527.00 back in 2011. Asking \$375.00. Pictures below



(Pictures of Sierra Passenger Cars Continued Next Page)

(Pictures of Sierra Passenger Cars
Continued From Previous Page)



The second set is a Christmas Aristocraft & USAT combined Freight car Set with USAT Locomotive, Caboose, Sound car, and 7 Aristo Freight cars consisting of the following:

ART-46025 Boxcar, ART-46125 Stock, ART-46225 Reefer, ART-46325 Flat Car with Custom Load, ART-46525 Piggyback, ART-41025 Gondola with Custom Load, ART-41325 Single Dome Tank, USAT #R13018 Christmas 2000 Refrigerator Sound Car, USAT # R12158 Center Cupola Caboose, and USAT # R22040 NW-2 Diesel Locomotive



(Pictures of Christmas Freight Train Continued From Previous Page)



Also included are a couple of small boxes of add on Christmas Decorations.

The sound car plays a medley of Christmas tunes and requires a couple of batteries to operate it. There is a switch located on the bottom of the car to activate it. The roof comes off for easy access.

Serious Offers only and can be seen at my home in Englewood, Fl, 34223 .

Bruce Benardo EM = Landline 941-474-2792. Leave message if machine picks up and I will call you back, or email me. bcb1226@comcast.net

Kathy Caldwell in Port Charlotte, Florida has some used brass track for sale:

Can be viewed and picked up at Kathy's home at:
1540 Schenley Street Port Charlotte FL 33952
Call 941-629-5952 or email at
blondie1638@comcast.net

Straight Track, Aristo and LGB, Good/Fair Condition, Mix of 1'; 2'; 3'; 4'; 5' lengths;
105 Linear Ft Total, (@ \$2 per Ft.)\$210



Re-railer with 1' track installed, Most Like New Condition,
some w/diodes for rev unit (not incl.), 8 Pieces @ \$5 each..... \$40



(Caldwell Track For Sale, Continued from Previous Page)

Curve Track, 4' diameter, 12 pc, New in Box.....\$50



Curve Track, 4' diameter, 8 pc Fair Condition (@ \$2 per Ft.),.....\$16

Curve Track, Misc., 18 Linear Ft. Fair Cond (@ \$2 per Ft.).....\$36

Switch Track Aristo manual, 2 ea, 4' dia curve, New in Box, @ \$25 each.....\$50



Switch Track Aristo manual, 4 ea, 4' dia curve, Fair Condition @ \$10 each.....\$40

(Caldwell Track For Sale, Continued on Next Page)

Bridge, 4', double track, track in good condition, glued to ballast, bridge usable.....\$30



Bridge, 4', single track, track in good condition, glued to ballast, bridge poor.....\$10



Misc Curve Track, 35 Linear Feet, Rough Condition but usable @ \$1 per Ft.....\$35

Misc Track, Poor Condition, rail in usable condition but needs new ties, 50 Linear Ft...\$10

Aristo graduated plastic trestle, fair condition, loose in box not counted.....\$5

Total, All Track.....\$532

Take it all.....\$400

Don't Forget to Order Your New Shirt!

Traditional "FGRS" Shirts

All shirts are \$35 which includes embroidering your name, taxes, and shipping to your home. The shirts are made by Core365 and are 100% Polyester – Moisture Wicking, Antimicrobial, UV protection, and easy care.

Men's shirts are available either with or without a pocket. Men's "Tall" sizes are only available without a pocket.

Color choices are True Royal (Blue) or White.

Sizes start at S,M,L,XL,2XL,3XL,4LX, and 5XL

Ladies sizes start at XS,S,M,L,XL,2XL, and 3XL

Youth sizes start at S,M,L,XL

Ladies sizes are true to size. Women who wear a men's large would need to order a ladies "extra large". These shirts are very comfortable and easy to care for. You will love them! All arrangements have been made. Order yours direct from the dealer using the form sent out in a separate document. Be sure to include your email address on the order form so they can contact you if there are questions about what you want. The order form is being sent as an additional attachment with this Newsletter and also is available on the Members page of the FGRS.org website.



FGRS Membership Application for 2024

The Florida Garden Railway Society (FGRS) invites you to join a group of people who share a common Interest in large scale trains, both indoors and outdoors, or modules. We are a group of individuals, couples, and families who enjoy socializing with others and participating in train related activities.

Dues for 2024: \$25/YR for single or family memberships.

Annual dues includes a subscription to FGRS Newsletter, via web and email. If you cannot receive the newsletter via internet, a printed copy will be mailed to you. All renewals are due in January. If you are interested in joining FGRS, or to renew your membership, please complete this application and send a check payable to

Florida Garden Railway Society (FGRS)

Attn: Ray Lambert, Membership Chairman

410 S Center Street

Eustis, FL 32726

Name: _____

Street: _____

City: _____

State: _____ Zip: _____

Phone#: _____

E-Mail: _____

Would you like your information shared with the club members (only)? Yes___ No___

Name badges are \$15 each. If mailed add \$1.00. The badge has two lines: One for your name, and the other line can have the town where you live, or the name of your railroad.

First Badge:

Name: _____

Town or RR Name:

Second Badge:

Name: _____

Town or RR Name:
