



January 2024

NEWSLETTER

Inside:
Don Carter tells how he
built a new bridge from
PVC, and some techniques
for weathering rolling stock



Membership Renewal
Made Easy!
See how on Page 2



Sharing the Joy of Garden Railroading Since 1990 !



PRESIDENT'S NOTES

From Fred Weber

January 2024

HAPPY NEW YEAR! Hopefully this is the year that the squirrels will not leave anything on your tracks!!

January has been busy so far, (sorry for the delay in these notes) with the DeLand Show two-day event. We had a great turnout with volunteers for both set up and teardown! Thanks to Phil Rizzuto, Ed Hirsch, Chip Danneker, Ross Marvin, Don Carter, Paul Marella, Don Foss, Ray Lambert, Rick Summers, Phil Barcelona and anyone else I missed! This show earned the Club around 20% of the annual budget.

Every Saturday, our members have the opportunity to run the club's trains or bring yours to run at the Bushnell Station Museum in Bushnell. Members also receive a 10% discount on all LGB and Pola products. Parts are also available at the museum as well. Don't forget that LGB will again be at the museum on March 2nd. They are planning more seminars because of last year's request!

As soon as the weather cooperates with us, we will be treating the wooden platform at Crew's Lake so that we can proceed with track laying.

The Club will be conducting a contest for building a few buildings needed to replace wooden ones at Bushnell Station and facades for Crew's Lake. More on this contest in the near future.

The Ohio trip details are coming out! Look for the special "All Aboard" with itinerary and deposit requirements. Chip Danneker, Mike Walls and Phil Rizzuto have done an amazing job in getting this adventure together.

Don't forget that it's time to pay your annual dues for membership. We have established an account with Squareup for your payment convenience. See the notice on the following page for details. Hope everybody's New Year is off to a rolling start!

Fred Weber, **FGRS President 2024**

Membership Renewal Made Easy!

You may have noticed an email in your inbox from: messenger@messaging.squareup.com

The Subject will have been: **"You have an invoice waiting (#000083)"**

Do not be alarmed! It is not a bill you have forgotten to pay, but it is a new system FGRS has adopted to make it easy for you to renew your membership at the beginning of the year!

When you open the email you will see this invitation to pay your dues online with a credit card. It is safe and secure - we are using the "Squareup" system that has been in use by many businesses and institutions for years. (<https://squareup.com/us/en>) When you open the email you will see:



When you hit the "Pay Invoice" button, it will take you to a personalized message from our Membership Chairman, Ray Lambert, inviting you to pay your dues with a credit card or other electronic means. Check to see that your name, address, phone number are all correct, enter your credit card information, hit "Pay Invoice", and you will immediately receive an acknowledgement that it has been paid. You will receive a printable receipt in your email box, also from "messenger@messaging.squareup.com".

Then you're set for another great year of garden railroading with the Florida Garden Railway Society!

If you do not have a PC or don't want to use your credit card, you can still pay with a check by mailing it to: **Florida Garden Railway Society (FGRS), Attn: Ray Lambert, Membership Chairman**
410 S Center Street, Eustis, FL 32726

Email or phone Ray with any questions about registration or paying your dues.
fgrs.membership1992@gmail.com, phone 954-551-3392

FGRS 2024 BOARD MEMBERS



FGRS President
Fred Weber
410-310-6001
Fgrs.president@gmail.com



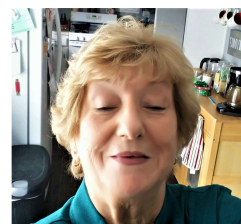
FGRS Vice President – Eastern Region
Phil Barcelona
386-562-4859
fgrs.vicepresident@gmail.com



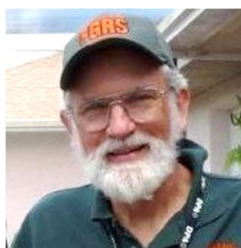
FGRS Event Coordinator
Chip Danneker
214-543-5133
chipdanneker@gmail.com



FGRS Secretary
Millie Weber
941-224-2996
Fgrs.secretary@gmail.com



FGRS Treasurer
Inga Thaw
352-341-7799
Thawwillie42@gmail.com



FGRS Newsletter
Paul Wagner
941-445-0409
Fgrs.newsletter@gmail.com



FGRS Membership
Ray Lambert
954-551-3392
fgrs.membership1992@gmail.com



FGRS Board Member at Large
Phil Rizzuto
845-590-1624
ptoytrains@aol.com



FGRS Board Member at Large
Don Carter
352-207-5434
doncarter521@embarqmail.com

2024 TRAIN SHOWS AND SPECIAL EVENTS

February 3rd & 4th, 2024 — The Villages Model Train Show & Sale — The Villages

The 2024 Model Train Show and Sale will take place on the weekend of February 3rd (9:00 am - 4:00 pm) & 4th (10:00am - 3:00pm) in the Savannah Regional Center, 1545 North Buena Vista Blvd, The Villages 32162. The show will feature multi-gauge operating layouts and items for all gauges available for purchase. Admission is \$7 however there is a discount coupon available on the club website. <http://www.thevillagesmodeltrainclub.com/>

February 17-18, 2024- RealRail's 45th Annual Train Show 10 AM – 3 PM

Bradenton Area Convention Center, 1 Haben Blvd, Palmetto, Florida

Adult admission \$15 at the door - Pre-Register at

www.SunCoastTrainShow.com for \$12 online admission price

For more information go to: <https://realrail.org/upcoming-events/rail-pass/>

February 24 — Regal Railways Train Show - New Port Richey

Regal Railways will be holding a train show at the Elks Lodge located at 7201 Congress Street, New Port Richey 34653 on Saturday February 24 from 9:00 - 2:00. Early bird hours are from 8:00 - 8:45. Admission is \$6 with kids under 12 free. Lunch is available.

February 24 — NE Florida Scottish Games & Festival — Green Cove Springs

This event takes place at the Clay County Fairgrounds - 2463 State Road 16 West in Green Cove Springs, 32043 (just south of Jacksonville). The club will have both the full layout and the kids display set up at the event. Gates open at 8:30. Go to <https://www.neflgames.com/> for details.

March 2 - Bushnell Station Train Museum Open House - Bushnell

Bushnell Station & Gulf Coast & Central Florida Train Museum located at 6470 West County Road 476, Bushnell, FL 33513 be holding an open house on Saturday March 2 from 10:00am - 4:00pm. Marklin/LGB will be sending representatives and will conduct multiple seminars. **See Full Page Ad on Following Pages.**

(Train Shows and Events Continued Next Page)

(Train Shows and Events Continued from Previous Page)

May 4 - Give Kids The World - Kissimmee

Give Kids The World has invited us to visit their resort located southeast of Disney off Hwy 192. Give Kids The World Village is a 89-acre, whimsical nonprofit resort for children with critical illnesses and their families. The resort's focus is to provide unique entertainment attractions, visits to nearby theme parks, and other fun activities for children of all abilities, including a G scale train layout! We last visited GKTW in September of 2021. For all who attended it was a memorable and moving experience. More details to follow.



2024 G-Scale Southern Regional Get-Together

Friday – August 23rd – Layout Tours

Saturday – August 24th – Vendor Hall

The 65th Atlanta Model Train Show • Duluth, GA

Sunday – August 25th – Layout Tours

**To be a vendor or exhibitor for the 1-day 65th Atlanta Model Train Show
contact Charlie Miller at rrshows@aol.com or 703-536-2954**

**Additional info coming soon to:
GGRS.info**

August 23 – 25, 2024 – G-Scale Southern Regional Get-Together, Atlanta Georgia

You may have heard that there will likely not be a National Garden Railway Convention in 2024, so the Georgia Garden Railway Society has teamed up with Charlie Miller of Golden Spike Enterprises (the force behind many of the train shows here in Florida) and will present a convention in the Atlanta area.

Visit Bushnell Station every Saturday from 10am - 4pm

In addition to the special Christmas Holiday Express openings, as always, you can get your train fix by visiting Bushnell Station every Saturday as well as a RR work day on Wednesdays.

AKA “The Gulf Coast and Central Florida Railroad Museum”, it is located at 6470 County Road 476 West, Bushnell, FL 33513.

The museum is open every Saturday from 10am - 4pm. As you know, FGSR is deeply involved with the museum and has an outdoor G scale layout up and running. Feel free to bring your trains for a run. There are many layouts of all scales inside the cool air conditioned museum. Don’t miss the café, serving (as Fred likes to say) the best hotdogs in the state! <https://bushnellstation.com/>

For a list of many other Train Shows go to

http://www.railserve.com/events/train_shows.html

LGB / MARKLIN Open House

WHEN

**Saturday, March 2, 2024
10 am – 4 pm**

WHERE

Bushnell Station

6470 West CR 476, Bushnell, Florida 33513

**FEATURING · Marklin & LGB Seminars on
DCC Operations and New Item Releases**

LGB

Marklin & Trix

MiniTrix

Marklin

G scale trains

H0 scale trains

N scale trains

Z scale trains

**Presented by: Gale Cousins – General Manager of
North America Operations for LGB / Marklin
Stacy Cousins – Marketing and Club Membership
& Rick Sinclair - Digital Specialist for Marklin / LGB**

PHONE: 352.901.0829

Website: www.BushnellStation.com

SPECIAL OPEN HOUSE PRICING

**\$6.00 for everyone
Under age 4 - Free**

INCLUDED

All Access Pass to:

All Seminars

Museum

Terminal A - Exhibits

Terminal B - Exhibits

Train Ride – ½ mile

HIGHLIGHTS

**LGB Museum – 1000 cars
and engines on display**

G Scale Garden Railroad

(Florida Garden RR Society)

G Scale Exhibit Hall

O Scale Exhibit

O Scale Switching Layout

On30 “Muskrat Ramble”

N Scale Layout

S Scale Layout

H0 Scale Layout

****Used items for sale by
train clubs throughout
the state**

BENEFITING

**The Gulf Coast and Central
Florida Railroad Museum Inc.
A 501 (c)(3) non-profit
corporation**

FGRS FALL OHIO ADVENTURE

All aboard for a fantastic opportunity to join your Florida Garden Railway Society friends this coming September on a trip to Ohio to experience area attractions, multiple layouts, and learn more about garden railroading



Come and join us this September for a memorable journey to the Buckeye State. Members will caravan in their own vehicles from Florida to Ohio to visit EnterTRAINment Junction in Cincinnati and over a dozen layouts in the Columbus area. Columbus is just two hours south of Cleveland. So you may want to add on a visit to Cuyahoga Valley with its scenic train ride throughout the park and the Rock & Roll Hall of Fame. The four day trip will depart on Thursday September 5th and culminate on Sunday September 8th when the group will tour numerous layouts hosted by the Columbus Garden Railway Society. On the way we'll have opportunities to meet up with the Georgia Garden Railway Society in North Georgia, ride the rails at Rail Explorers in Versailles, KY, and visit Me Love trains in Dublin, GA. Cost is \$75 per person which covers early entry, full access and a VIP tour at EnterTRAINment Junction along with a group luncheon on Saturday. Also the group dinner on Sunday is included. When we determine the size of the group the FGRS will investigate discounted hotel blocks in Georgia, Cincinnati, & Columbus.

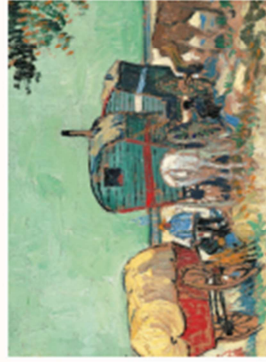


Registration will commence in early February

Itinerary

DAY 1 & 2 - SEPT 5 & 6: TRAVEL TO OHIO

On Thursday September 5th the group will depart in their own vehicles from Central Florida and head north via I-75 toward Marietta Georgia (about 7 hours). We'll meet members of the Georgia Garden Railway Society for dinner. On Friday we'll head to Cincinnati (another 7 hour trip). On the way there's a great opportunity for an optional visit to Railway Explorers in Versailles, KY. <https://www.railexplorers.net/tours/bluegrass>



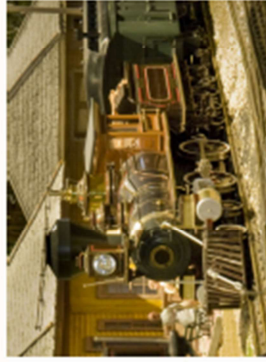
A caravan to Ohio. What better way to make new friends!



Ride the rails in Kentucky on the way to Ohio!

DAY 3 SEPT 7: ENTERTRAINMENT JUNCTION

After spending the night in Cincinnati we'll head over to EnterTRAINment Junction <https://entertrainmentjunction.com/>. The local attraction, boasting the largest train display in the world, is renowned for its 25,000 square feet of interactive layouts containing ninety g-scale trains. Your registration fee will cover early entry privileges and a group VIP tour as well as a group luncheon. After lunch we'll head off to Columbus (about a 2 hour drive). Dinner is on your own.



Over two miles of track on a journey through distinct times in US history



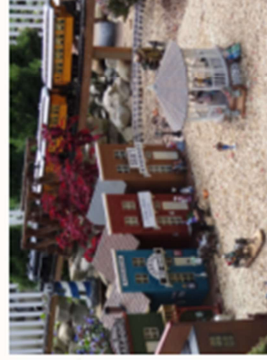
Enjoy a group luncheon at EnterTRAINment Junction

DAY 4 SEPT 8: CGRS LAYOUT TOURS

On Sunday the group will tour Columbus Garden Railway Society layouts throughout the Columbus area. More than a dozen CGRS members participate in this annual event. The busy day will culminate with the group dinner covered in the registration fee. On Monday you can head home or go north to Cleveland and enjoy Cuyahoga Falls and/or The Rock & Roll Hall of Fame.



The annual CGRS event attracts visitors far and wide



Some of the best layouts in Ohio will be highlighted

2024 FUN RUNS

There are NO FGRS Member backyard Fun Runs scheduled as of this writing! Come on you guys! I know that there are several layouts being rebuilt at this time, but surely some of you have railroads ready to run?!!!

If you are interested in hosting a Fun Run contact:

Chip Danneker – FGRS Event Chairman

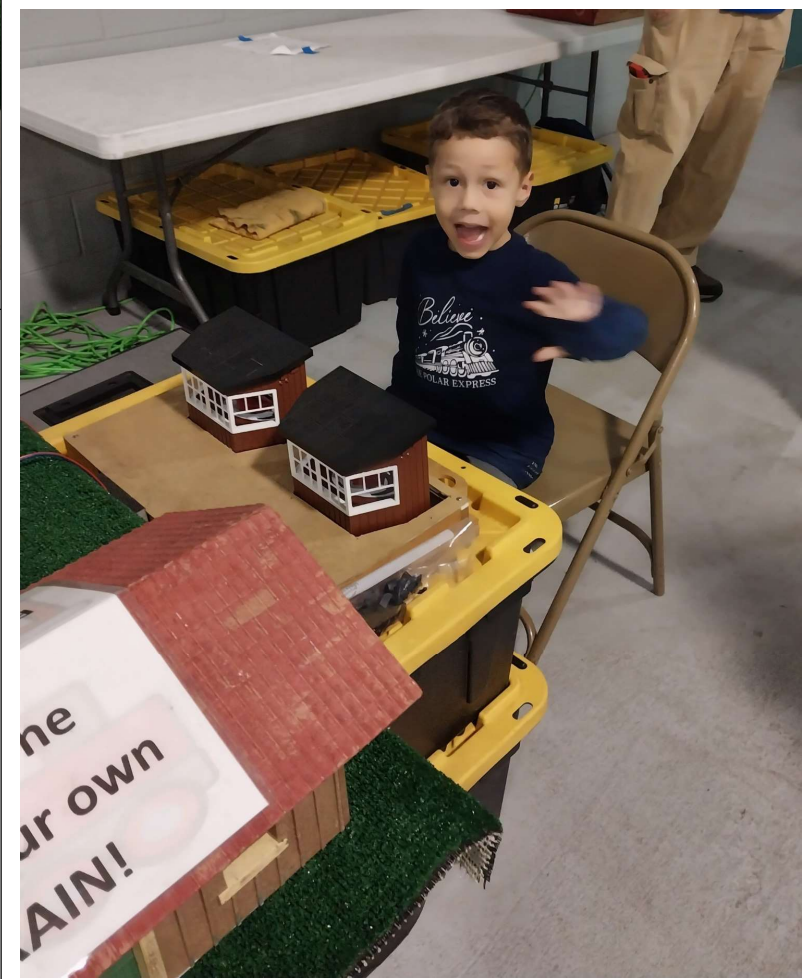
chipdanneker@gmail.com 214-543-5133

Deland Railfair Review

January 13 – 14

Photos By Rick Kissenger and Chip Danneker





Recent Projects from Don Carter

Photos and article by Don Carter

A new addition to the railroad this past year was the rebuilding of the bridge crossing the bog. After 20 years or so in service, the old bridge was ready to go.

I built this one out of PVC trim boards glued together with PVC cement. The PVC cement works great and is quick. The main benefit of using PVC instead of wood is that it does not rot or warp, so it should be there a long time. Here are a few shots of work in progress:



It's a little flimsy until it's all put together. Most of the strength is below the track bed.

I painted the bridge in sections before assembly.

Here is the glue I used on the PVC joints. No primer is needed with this glue.



First I sand everywhere I'm going to glue to get the shine off.

Lightly sand each entire part and paint areas that will be hard to reach. I covered the potential glue points to keep paint off the area to be glued. Glue sparingly: be careful not to use too much.

Clamp the joints for at least 30 minutes - sometimes 8-12 hrs - where there will be a lot of pressure. PVC glue tends to make the piece move when under pressure, so the clamps keep things in place until the glue dries.



Track is screwed to the bottom ribs before the sides are added. Here's the completed bridge, ready to put in place.



After checking to make sure the container cars would clear, I finally installed the bridge in place. As you have seen if you attended my December Open House, so far there are no problems.



Weathering Train Cars



I've been doing some practicing on weathering train cars the past few months.

I have watched some videos on YouTube to get some ideas what others do. I used a combination of pastels; ("Pan-Pastels") brushed on acrylic hobby paints; air brushing; and various "rattle can" hobby spray paints.

(Don Carter Weathering Train Cars, Continued From Previous Page)

I went a bit wild on this one!



The one below was done with an airbrush, but I used pan-pastels paint to simulate light dirt. Rust on the knuckle couplers is pastel paint too. I used a brush for those.



Here are pictures of the acrylic paint and pastels I used. I used these two bottles of acrylic paint with an air brush. Both can be thinned down with water.



I used the pastels to do light streaks on the sides of the cars and smoke soot on the top of locomotives with a small paint brush. I then sprayed the entire car with a dull coat or clear matt finish sealer spray. This will tone down the colors and seal it.

There are many websites on weathering that are easily found by typing in "***weathering train cars***". Most will be about weathering HO trains but the principle is the same.

All these supplies can be bought at a craft or hobby store, Michael's, Joann Fabrics, or Hobby Lobby where craft painting supplies are sold. Some train stores also carry them, or, of course, you can find them online. One online train store that carries pan pastels is "Model Trains Solutions".

<https://model-train-solution.myshopify.com/>

Product News

January 2024

You can download an LGB catalog of LGB's *New Items* at <https://www.lgb.com/products/product-information/catalogs/new-items> or pick up a printed copy at Bushnell Station, our LGB dealer. The President of Bushnell Station, Craig Hurst, tells us that he is stocking some new products from LGB, including the Amtrak baggage car.

There are NO SHIPPING CHARGES when the item is picked up at Bushnell Station

You can get a complete LGB catalog when you drop into the Bushnell Station hobby shop when you come out to run trains on our layout, ride the train, and visit the museum exhibits there.

Gulf Coast and Central Florida Railroad Museum at "Bushnell Station" is at 6470 WC 476 (County Road 476 West), Bushnell, FL 33513

Phone: 352.901.0829

Cell/Text: 352.250.0905

Email: BushnellStation@gmail.com

Website: www.BushnellStation.com

Piko-America has new items available. Their complete website is at:

<https://www.piko-america.com/pages/g-scale>

Fred Weber has 2024 Piko catalogs. Contact Fred at 410-310-6001 if you would like to arrange to pick one up. Catalogs and tech info are also available online for free download.

Split Jaw Products continues to concentrate on rail clamps, bridges, turntables, track products, and new developments. They introduced 3 new bridges; Deluxe Pratt Truss, and massive 6ft Double Arch trusses in Single and Double track. Info is on our website. Here is a link: <https://www.railclamp.com/shop-bridge-collection> There is an upgrade to the Auto-Reversing Shuttle controller, adding an easier way to adjust the stop pause time, and an **optional intermediate stop** for customers with longer (min 20ft) runs. The HR stainless steel track line is in full production, and turnouts will be added to the line soon. They also carry a line of custom and rare large scale trains in their "Custom Shop" department. Split Jaw Products can be purchased at Bushnell Station. Look for an announcement of new Split Jaw products over the next months.

<https://www.railclamp.com/>

Bachmann Trains is now shipping the Dash 9 Diesel Locomotives in a variety of road names. They are also shipping parts for this locomotive which should be interchangeable for the similar unit previously produced by Aristocraft. Star Hobbies and others are stocking these.

https://shop.bachmanntrains.com/index.php?main_page=index&cPath=255

USA Trains is now shipping the 4-8-4 FEF-3 Locomotive with Sound, and some new Christmas decorated cars

<https://www.usatrains.com/>

Member Train Items For Sale

Looking to buy or swap something? Send in
your request- FGRS.Newsletter@gmail.com

This page has been created solely as a convenience to our members who want to buy and sell from other club members. FGRS takes no responsibility for the condition of the items or sale of items. Any transaction is completely between the buyer and seller.

Please submit items you would like to buy or sell to Paul Wagner, FGRS.Newsletter@gmail.com

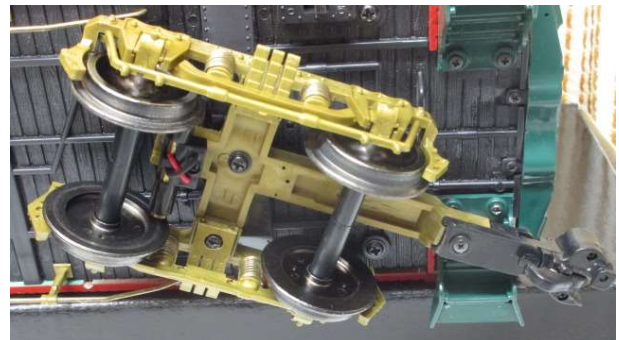
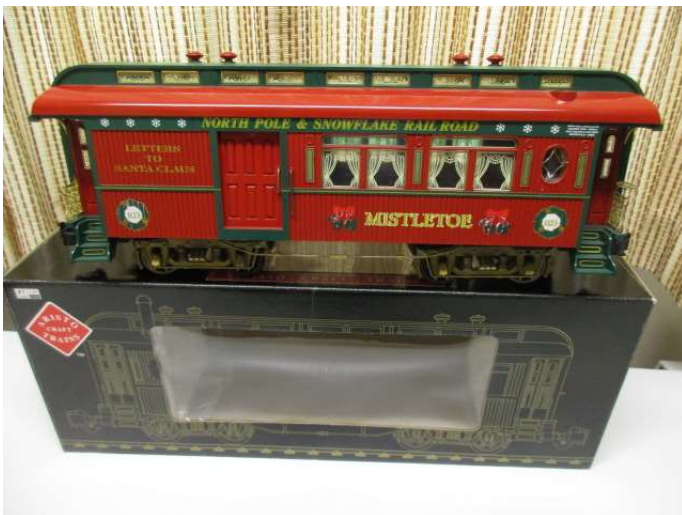
Ads will be run for 2 months if they are not renewed. Please notify me when an item is sold, so it can be removed from the following newsletter. – Paul Wagner

Bruce Benardo in Englewood, Florida has two Christmas train sets for sale:

I have the following Christmas train sets for sale. Both are in like new condition with very little run time and all have been updated to steel wheelsets. All have Aristo Knuckle couplers.

The first set is a Aristocraft #31025-3 Sierra Style Passenger Car set consisting of 1-combine,1-coach, and 1-observation, all lighted and have been converted to solid axle steel wheelsets , No more plastic sleeves to crack and fall apart.

Beautiful Artwork & Trim. The set retailed for \$527.00 back in 2011. Asking \$375.00. Pictures below



(Pictures of Sierra Passenger Cars Continued Next Page)

(Pictures of Sierra Passenger Cars
Continued From Previous Page)



The second set is a Christmas Aristocraft & USAT combined Freight car Set with USAT Locomotive, Caboose, Sound car, and 7 Aristo Freight cars consisting of the following:

ART-46025 Boxcar, ART-46125 Stock, ART-46225 Reefer, ART-46325 Flat Car with Custom Load, ART-46525 Piggyback, ART-41025 Gondola with Custom Load, ART-41325 Single Dome Tank, USAT #R13018 Christmas 2000 Refrigerator Sound Car, USAT # R12158 Center Cupola Caboose, and USAT # R22040 NW-2 Diesel Locomotive



(Pictures of Christmas Freight Train Continued From Previous Page)



Also included are a couple of small boxes of add on Christmas Decorations.

The sound car plays a medley of Christmas tunes and requires a couple of batteries to operate it. There is a switch located on the bottom of the car to activate it. The roof comes off for easy access.

Serious Offers only and can be seen at my home in Englewood, Fl, 34223 .

Bruce Benardo EM = Landline 941-474-2792. Leave message if machine picks up and I will call you back, or email me. bcb1226@comcast.net

Kathy Caldwell in Port Charlotte, Florida has some used brass track for sale:

Can be viewed and picked up at Kathy's home at:
1540 Schenley Street Port Charlotte FL 33952
Call 941-629-5952 or email at
blondie1638@comcast.net

Straight Track, Aristo and LGB, Good/Fair Condition, Mix of 1'; 2'; 3'; 4'; 5' lengths;
105 Linear Ft Total, (@ \$2 per Ft.)\$210



Re-railer with 1' track installed, Most Like New Condition,
some w/diodes for rev unit (not incl.), 8 Pieces @ \$5 each..... \$40



(Caldwell Track For Sale, Continued from Previous Page)

Curve Track, 4' diameter, 12 pc, New in Box.....\$50



Curve Track, 4' diameter, 8 pc Fair Condition (@ \$2 per Ft.),.....\$16

Curve Track, Misc., 18 Linear Ft. Fair Cond (@ \$2 per Ft.).....\$36

Switch Track Aristo manual, 2 ea, 4' dia curve, New in Box, @ \$25 each.....\$50



Switch Track Aristo manual, 4 ea, 4' dia curve, Fair Condition @ \$10 each.....\$40

(Caldwell Track For Sale, Continued on Next Page)

Bridge, 4', double track, track in good condition, glued to ballast, bridge usable.....\$30



Bridge, 4', single track, track in good condition, glued to ballast, bridge poor.....\$10



Misc Curve Track, 35 Linear Feet, Rough Condition but usable @ \$1 per Ft.....\$35

Misc Track, Poor Condition, rail in usable condition but needs new ties, 50 Linear Ft...\$10

Aristo graduated plastic trestle, fair condition, loose in box not counted.....\$5

Total, All Track.....\$532

Take it all.....\$400

Don't Forget to Order Your New Shirt!

Traditional "FGRS" Shirts

All shirts are \$35 which includes embroidering your name, taxes, and shipping to your home. The shirts are made by Core365 and are 100% Polyester – Moisture Wicking, Antimicrobial, UV protection, and easy care.

Men's shirts are available either with or without a pocket. Men's "Tall" sizes are only available without a pocket.

Color choices are True Royal (Blue) or White.

Sizes start at S,M,L,XL,2XL,3XL,4LX, and 5XL

Ladies sizes start at XS,S,M,L,XL,2XL, and 3XL

Youth sizes start at S,M,L,XL

Ladies sizes are true to size. Women who wear a men's large would need to order a ladies "extra large". These shirts are very comfortable and easy to care for. You will love them! All arrangements have been made. Order yours direct from the dealer using the form sent out in a separate document. Be sure to include your email address on the order form so they can contact you if there are questions about what you want. The order form is being sent as an additional attachment with this Newsletter and also is available on the Members page of the FGRS.org website.



FGRS Membership Application for 2024

The Florida Garden Railway Society (FGRS) invites you to join a group of people who share a common Interest in large scale trains, both indoors and outdoors, or modules. We are a group of individuals, couples, and families who enjoy socializing with others and participating in train related activities.

Dues for 2024: \$25/YR for single or family memberships.

Annual dues includes a subscription to FGRS Newsletter, via web and email. If you cannot receive the newsletter via internet, a printed copy will be mailed to you. All renewals are due in January. If you are interested in joining FGRS, or to renew your membership, please complete this application and send a check payable to

Florida Garden Railway Society (FGRS)

Attn: Ray Lambert, Membership Chairman

410 S Center Street

Eustis, FL 32726

Name: _____

Street: _____

City: _____

State: _____ Zip: _____

Phone#: _____

E-Mail: _____

Would you like your information shared with the club members (only)? Yes___ No___

Name badges are \$15 each. If mailed add \$1.00. The badge has two lines: One for your name, and the other line can have the town where you live, or the name of your railroad.

First Badge:

Name: _____

Town or RR Name:

Second Badge:

Name: _____

Town or RR Name:
