



December 2021

NEWSLETTER



*Celebrating 30 Years of Garden
Railroading!*

PHOTO ABOVE: IT WAS ANYTHING BUT A "SILENT NIGHT" AT SID AND JOANNA SMALL'S "CHRISTMAS LIGHT-UP NIGHT" ON DECEMBER 8TH.

INSIDE:

PREVIEWS OF UPCOMING MEETS AND EVENTS; 30 YEAR CELEBRATION UPDATE; REFLECTIONS FROM LAST MONTH'S FUN RUNS; "LEMONADE STAND"; "GARDEN TRAINS ANNUAL" REVIEW; AND MORE!

GO TO WWW.FGRS.ORG, "EVENTS" PAGE TO SEE PHOTOS FOR OUR UPCOMING OPERATING SESSIONS. GO TO THE "MEMBERS SIGN-IN" TO SEE THE CURRENT MEMBER ROSTER, NEWSLETTER BACK ISSUES, AND MORE!



PRESIDENT'S NOTES FROM FRED WEBER

December 2021

Here we are at the end of the year. It's been a very busy year, with many activities coming up next year. We hope to keep up the fun with more model railroading, starting the year with the Deland Show, Sundance Model Railroad Tour, 30-year anniversary, and the Jacksonville Scottish festival. The Gulf Coast and Central Florida Railroad Museum in Bushnell and the Railroad Museum of South Florida in Ft Myers have both been working with FGRS and they are having Holiday Express Train rides. Be sure to check out one or both of these events announced in this newsletter. Also, the construction of our new outdoor layout at Bushnell Station is starting up, and will offer lots of opportunity to learn and help build a G scale layout.

Shirt update: The royal blue club shirts without pockets only are out of stock until the end of January. White shirts are running low also. Get your shirt orders in before supplies run out.

The FGRS Board has been busy. We could use some help to continue to get the club work completed. If you can attend a Zoom meeting every couple of months and work on small projects in your spare time, we would love the help. The meetings are no longer than 1 hour, per orders of the President. This is an opportunity to input your ideas to help the club continue to grow in the new year.

I hope Santa brings you that special engine, car, plant, or building you need for your garden railroad.

Happy and safe Holidays to all!

And Happy Railroading -

- *Fred Weber*, FGRS President 2021

Letters From Our Members

Merry Christmas from Sid and Anita Small, Sebastian, Florida!



We had a very pleasant Christmas Light Up Night event . It was a perfect night - not cold, not too warm, and not too buggy. There was food, drink, camaraderie and enjoyment of our lighted railway. We had over 100 people from many different areas. We even had a birthday boy (90 years!) grace our event and we sang happy birthday. All in all, it was another success!



From Bruce Brunson, Wesley Chapel, FL:

Is there someone close to Tampa who can help me with my Locolinc R/C wiring and setup? Email Bruce - bcbrunsonmd@sopris.net

Got a question? Got something to say? Need to ask for some advice or assistance? Send in a letter for publication in the FGRS Newsletter. Email or phone:

Paul Wagner

941-445-0409

Fgrs.newsletter@gmail.com

The New Shirts are Ready!

Both 30 Year Anniversary *and* Traditional “FGRS”

All shirts are \$35 which includes embroidering your name, taxes, and shipping to your home. The shirts are made by Core365 and are 100% Polyester - Moisture Wicking, Antimicrobial, UV protection, and easy care.



Traditional Shirts
Available in True Royal (Blue) or White



30 Year Anniversary Shirts
Available Only in “Platinum”

Men’s shirts are available either with or without a pocket. Men’s “Tall” sizes are only available without a pocket. 30 Year Shirts are not available in “Tall” or with a pocket.

Color choices are True Royal (Blue) or White. 30 Year Shirts come only in “Platinum”

Sizes start at S,M,L,XL,2XL,3XL,4LX, and 5XL

Ladies sizes start at XS,S,M,L,XL,2XL, and 3XL

Youth sizes start at S,M,L,XL

Ladies sizes are true to size. Women who wear a men’s large would need to order a ladies “extra large”. These shirts are very comfortable and easy to care for. You will love them! All arrangements have been made. Order yours direct from the dealer using the form sent out in a separate document. The form with 30 Year Anniversary Shirts added is being sent out again as you receive this Newsletter. Be sure to include your email address on the order form so they can contact you if there are questions about what you want. Watch for the order form which is being sent out in a separate email today.

FGRS 2021 BOARD MEMBERS



FGRS President
Fred Weber
410-310-6001
Fgrs.president@gmail.com



FGRS Vice President – Eastern Region
Phil Barcelona
386-562-4859
fgrs.vicepresident@gmail.com

**YOUR PICTURE
COULD BE HERE!**

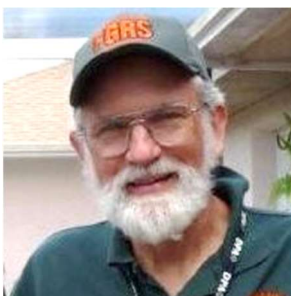
FGRS Vice President – Western Region
Position Open – This can be you!



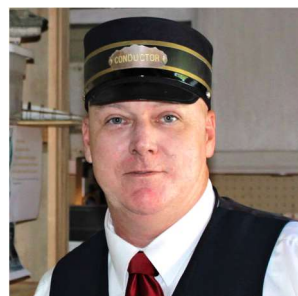
FGRS Secretary
Millie Weber
941-224-2996
**Fgrs.secretary@
gmail.com**



FGRS Treasurer
Melinda Archer
727-421-5894
**Fgrs.treasurer@
gmail.com**



FGRS Newsletter
Paul Wagner
941-445-0409
**Fgrs.newsletter
@gmail.com**



FGRS Membership
Jay Archer
727-736-1989
**Fgrs.membership
18@gmail.com**

2022 TRAIN SHOWS AND EVENTS

Special Christmas Museum and Train Ride Events:

December 10, 11, 17 & 18 - Holiday Express Train Ride

THE GULF COAST AND CENTRAL FLORIDA RAILROAD MUSEUM

BUSHNELL, FLORIDA

6:00 pm to 9:00 pm

6470 County Road 476 West

Bushnell, FL 33513

See Details in Following Pages

December 10 – 30 – LAKES PARK & GULF RAILROAD HOLIDAY EXPRESS

Railroad Museum of South Florida at Lakes Regional Park, Ft Myers

Weekdays 10:00 am to 2:00 pm and 6:00 pm to 9:00 pm, weekends 10:00 am to 9:00 pm, with the exceptions of 10:00 am to 2:00 pm on Christmas eve day and closed Christmas eve evening and all day Christmas.

Lakes Regional Park

7330 Gladiolus Drive

Fort Myers, FL 33908

See details on the following pages.

January 9 - 10, 2022 –75th Railfair, Deland, Florida

9am – 4pm

Volusia County Fairgrounds

Go to <https://10times.com/rail-fair-florida> for more information

January 15 – 16, 2022 - Martin County Model Railroaders

Model Train Show and Sale

Saturday and Sunday January 15 -16

9-3 both days

Martin County Fairgrounds

2616 SE Dixie Highway

Stuart, Florida

February 18 - 20, 2022 – FGRS 30 YEAR ANNIVERSARY!

(OK its 31 years!) Save the date! More information in this issue.

February 26th, 2022 - Northeast Florida Scottish Games and Festival

We will be setting up the club layout and joining in the festivities

Clay County Fairgrounds

2497 State Road 16 West, Green Cove Springs, FL.

The festival will begin at 9 AM and run until 10PM

(See Details on the following pages)

March 5, 2022 - Melbourne Train & Toy Show

9am - 2pm

Azan Shrine Center, Melbourne, Florida

Go to <http://schultzspacecoasttrains.com/> for information

June 19th - 25th, 2022

NATIONAL GARDEN RAILWAY CONVENTION 2022

Denver, Colorado

For more information go to

<https://www.ngrc2022.org/>

For a Complete list of Train Shows go to

http://www.railserve.com/events/train_shows.html



THE GULF COAST AND CENTRAL FLORIDA RAILROAD MUSEUM
BUSHNELL, FLORIDA
CORDIALLY INVITES YOU TO OUR

Holiday Express Train Ride

December 10, 11, 17 & 18

6:00 pm to 9:00 pm

6470 County Road 476 West
Bushnell, FL 33513

Join us for a colorful journey through our winter wonderland train ride and see all the lights and figures that make our holidays joyful

Reservations: www.BushnellStation.com

Or call us at 352.901.0829



LAKES PARK & GULF RAILROAD HOLIDAY EXPRESS

Lakes Regional Park, 7330 Gladiolus Drive, Fort Myers, FL 33908

They have all sorts of holiday lights and various seasonal displays set up on the outdoor layout. This gets large public attendance here in Fort Myers.

LAKES PARK & GULF RAILROAD HOLIDAY EXPRESS SCHEDULE:

BEGINNING FRIDAY 12/10/2021 THROUGH 12/30/2021, WEEKDAYS 10:00 AM TO 2:00 PM AND 6:00 PM TO 9:00 PM, WEEKENDS 10:00 AM TO

9:00 PM, WITH THE EXCEPTIONS OF 10:00 AM TO 2:00 PM ON CHRISTMAS EVE DAY AND CLOSED CHRISTMAS EVE EVENING AND ALL DAY CHRISTMAS. CHILDREN 1 YEAR OLD TO 5 YEARS OLD FREE, THOSE 6 YEARS AND OLDER \$6.00

WE ARE ENCOURAGING GUESTS WHO ARE NOT VACCINATED TO WEAR A MASK WHEN ENTERING THE MUSEUM OR RIDING THE TRAIN. FREE MASKS ARE PROVIDED. HOPE TO SEE YOU SOON!!!

The train will continue to operate for all ticketed passengers waiting in line until everyone is accommodated. We are required to suspend operations during thunderstorms and other unforeseen eventualities, such as mechanical difficulties.



WORK ON OUR NEW RAILROAD HAS BEGUN!

As you can see, progress is being made on the layout we will be building at the Bushnell Station. The lumber to raise the layout has arrived and ground has been broken. Construction will begin after the first of the year. Big Christmas train rides with lights and decorations is the activity of December at the Museum. Come and enjoy !





Northeast Florida Scottish Games and Festival are bringing a *"Wee Bit o' Scotland"* to the Northeast Florida area. Each year residents of Northeast Florida and the surrounding areas gather and enjoy the athletics, music, food and fun of the games.

The Games continue to grow and reflect the deep connections and effects the Scots and their descendants have had on the United States as well as Northeast Florida in particular. As always our event will be held the last Saturday of February, the games will be held at:

Clay County Fairgrounds
2497 State Road 16 West, Green Cove Springs, FL.
Saturday February 26th, 2022
The festival will begin at 9 AM and run until 10PM.

Dear Members,

Come and enjoy the spirit of Scottish History! The club will be setting up our train display and running trains for visitors of the Festival. If you would like to enjoy the fun of the festival, bring your trains to run, run the club trains, and explain the hobby to the visitors, COME JOIN US!

The Festival is on February 26, 2022 at the Clay County Fairground outside Jacksonville. We will be setting up on Friday the 25 and will need to dismantle the layout after the Festival.

Both these events are an excellent way to show off the club and run trains.

If you have any concerns, questions or ideas to make this a better event please call.

Please call me at 410-310-6001

Fred Weber, FGRS President

UPCOMING FGRS FUN RUNS/OPERATING SESSIONS AND FGRS MEETS AT SPECIAL TRAIN ATTRACTIONS

Saturday, December 18, 2021 - 9 AM - ?

FGRS Member, Doug Brainard, has arranged for the FGRS to have a special visit and Fun Run at the Spring Hill Botanical Gardens G Scale Railroad with a visit to his home and garden railroad for a picnic lunch. Bring a picnic lunch, Doug will provide drinks at his house.



"I am looking forward to seeing you all on Saturday, December 18th, first at the Nature Coast Botanical Gardens from 9 until 12:30. We can gather at the Gardens to enjoy the railroad and explore the gardens. Then, I would like you all to visit my garden railroad layout at my home about 5 miles from the Gardens. The gardens has a nursery if you would like to browse and purchase plants while you are there.



**The Botanical Garden address:
1489 Parker Avenue
Spring Hill, FL, 34606**

This new village has just been completed on the Botanical Garden Railway

DIRECTIONS TO THE

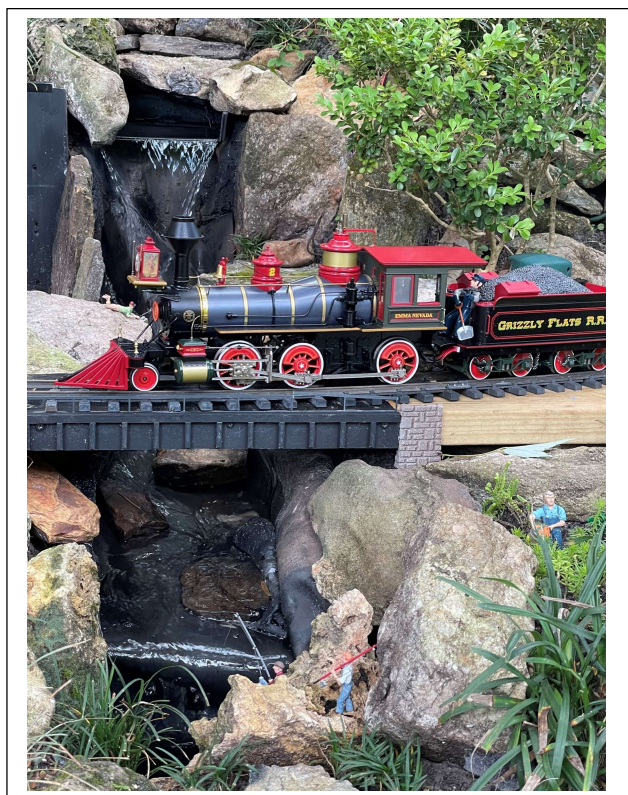
GARDEN: (click here to be sent to google maps) **the garden is directly across from this house.** From the south of Tampa -- Highway 19 N turn right or east on Spring Hill Drive (you will see the waterfall and flags at the entrance) then continue approx 1/2 mile to Parker Ave., turn left and the gardens are about 2 blocks on your left.

(Continued Next Page)



From the North -- Highway 19 S turn left or east on Spring Hill Drive continue approx. 1/2 mile to Parker Ave, turn left and the gardens are about 2 blocks on your left. There is a fire station next to the gardens. The gardens will be decorated for Christmas.

At 12:30, we will head over to my place. When you arrive at my house, you will see my "Centralia" Garden Railroad, which is based on a local lumber town that had 2000+ people from 1900 until 1922, when they cut all the lumber and since has been a ghost town. My layout was on the tours for the NGRC in Tampa in 2014. **Bring a picnic lunch, chairs, and train to run, track or battery powered. Drinks will be provided.** I'm looking forward to seeing you on the 18th." – Doug Brainard



Doug Brainard's home is at
8119 Earleshire Ln
Spring Hill, FL 34606

(Upcoming Fun Runs Continued Next Page)

(Upcoming Fun Runs, Continued)

**Saturday, January 15, 2022 - Special FGRS Visit to the
“Sundance Central” Museum and Fine Scale Fn3
(G gauge) Layout in Odessa, FL**

Details to follow as they become available



Sunday, April 24, 2022 - Fun Run at the Home of Charlie Beall

Address:

7839 Sloewood Dr
Mount Dora, FL
Phone 352-383-3976
Details to follow



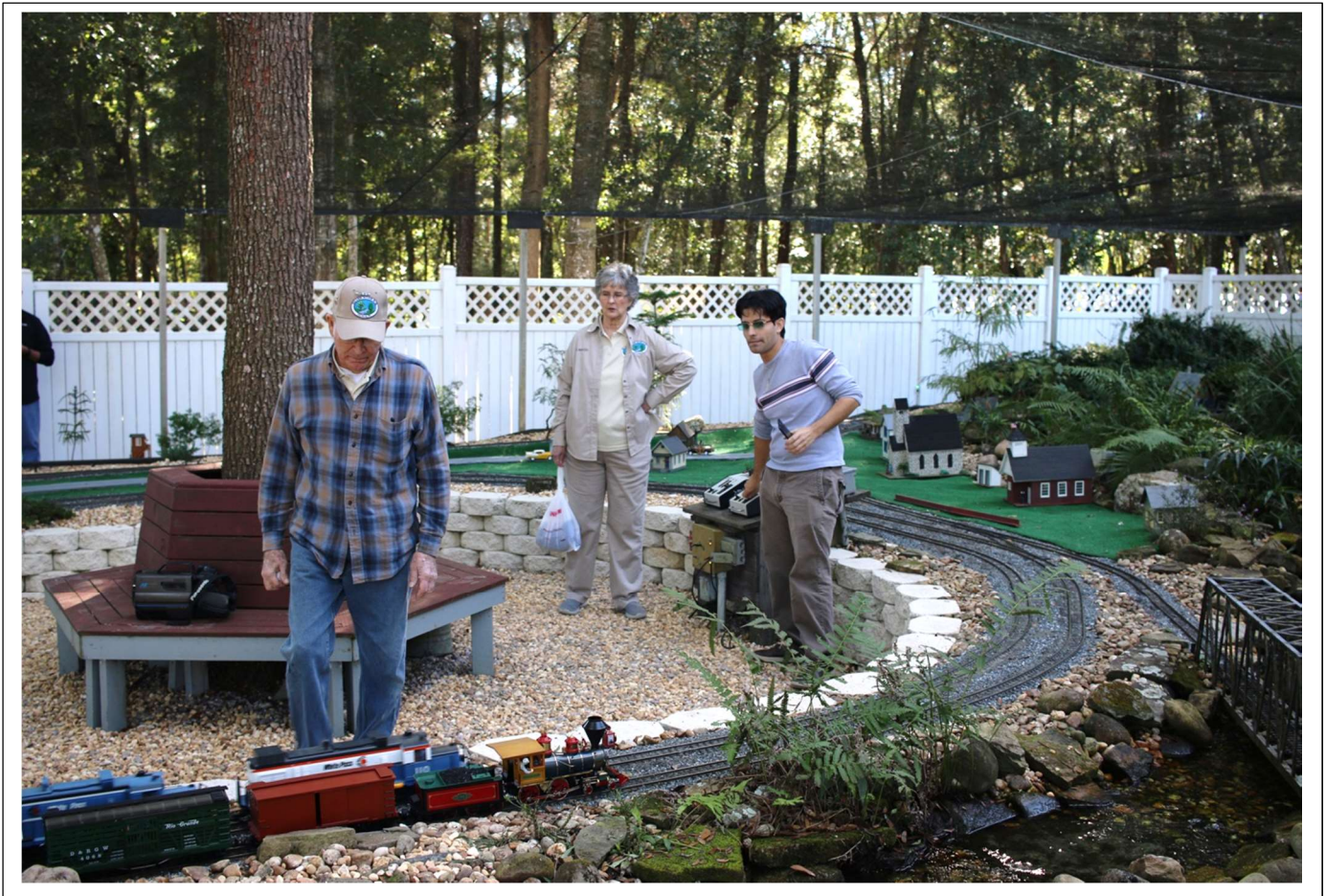
CALENDAR PLANNING FOR FUTURE FUN RUNS

We're looking for members to host Train Operating Sessions and Fun Runs for the coming months.

If you are interested in hosting, please contact Paul Wagner, the FGRS Newsletter Chairman at FGRS.Newsletter@gmail.com

Reflections From FGRS Open House Fun Run The SILVER RIVER RAIL ROAD At Don and Lenojo Carter's Home in Ocala, Florida Saturday November 27 By Fred Weber

The November fun run at the Carter's saw a much bigger layout than in the past. Our members enjoyed running their trains on a much bigger loop. Ray and Juan both had their trains running and enjoyed watching them climb the 60' long grade!



Don has put bridges across his driveway so trains can run toward the front yard. The elevated tracks are now connected to the main layout. There was a scavenger hunt for all to look for the many details on the Carter layout.



This layout has a lot to do and see. For those who missed it, plan on visiting at the next event at the Silver River Railroad.

A new addition has been added to the elevated platform – a 35' X 45' oval, designed for live steam operation. This area also serves for easy train setup and eye level operation for children. This addition is now connected to the main



layout so as to access the complete area. Another addition is a semi-elevated track that circles the back and road side fence to ground level as a reverse loop, about 437' long. It crosses over the back drive way on a 12' bridge.

Fishing is not permitted on the water feature.



Reflections From FGRS Open House Fun Run The LANE PARK AND WHERE EVER RR Taveres, Florida By Paul Wagner

A good crowd was treated to some fine weather, multiple trains running, and some fine food and fellowship in the Taisch's beautiful sunny dining room. Dave and Ruth are quite a team, and the trains were running faultlessly. The recently refurbished mountain looked great, and we never get over the miles and miles of trestles on this big layout.



Above, relaxing in the sun while the trains chug on by



Here, Ruth Taisch (Left) and the brain trust for several other FGRS garden railways pause for a photo in the sun.

(Lane Park, Continued)



Meanwhile, Engineer Dave Taisch keeps a steady hand on the throttle as Old #11 is “coming ‘round the mountain when she comes!”



Ruth’s scratch-built station (Below) is ready for the afternoon freight, while the unconcerned freight agent sits on a barrel.



Longtime member George Sheldon and his daughter look on as a freight train winds over the long wooden trestle



THE 30 YEAR FGRS ANNIVERSARY!!!!!!!!!!!!

FEBRUARY 18 TO 20, 2022

THREE DAYS OF RAILWAY FUN IN BEAUTIFUL FORT MYERS!

Dear Members:

30 YEAR ANNIVERSARY UPDATE!!!!!!!!

30 DAYS LEFT FOR THE DISCOUNTED RATE!

YOU HAVE 30 DAYS UNTIL THE DISCOUNTS ON BOTH PACKAGES ARE OVER. THIS WEEKEND EVENT MAKES A GREAT CHRISTMAS PRESENT!

(See details on the page preceding the Registration Form on the following pages)

Around the second week in February, you will receive a special email for location and times of the layouts open on Friday the 18th. We will be at the Quality Inn with your program and important information you will need to know. Look for us between 1PM to 4PM in the lobby. You must be at the Murder Mystery train station by 5:30 PM!

The swap meet will be on Sunday morning in the parking lot of the Quality Inn. This will be an "out of the trunk" sale. It will start at 8 AM and run until 9:30 AM. Sell items right out of your car or bring your own table. We don't have a room to set up the club layout and use for the swap meet.

See the details for hotel pricing and making reservations on the page following the Event Registration page. We are working out an arrangement to give you a credit of up to \$20 per night on your room which will be applied to your bill at check out, reducing your hotel bill substantially at that time.

Our Saturday night dinner will be in the Lee County Park. Please be very discreet if you bring any alcohol. We are having an Italian dinner which I know will go well with beer and wine.

Any questions please reach out to me.

- Fred Weber

FGRS President

(30 Year Celebrations Plans Continued Next Page)

(Continued from Previous Page)

Here is a quick rundown of the activities:

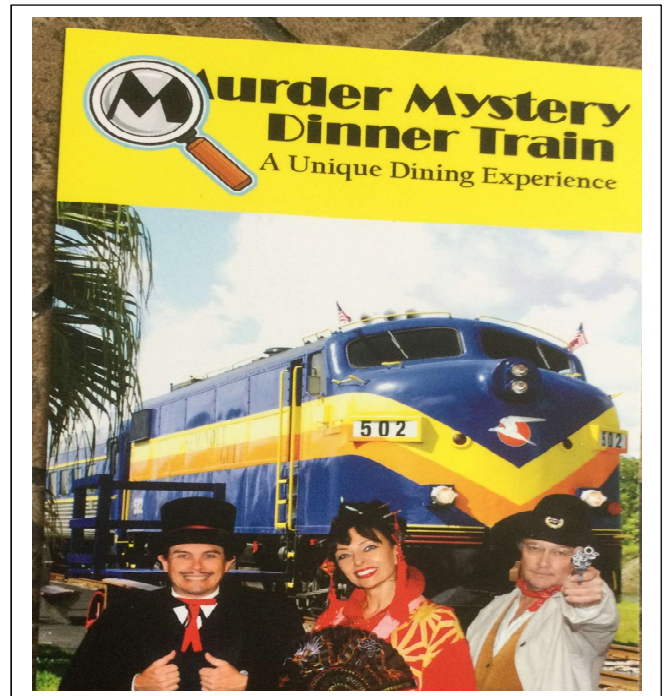
Friday, Feb 18, 2022:

- **Five FGRS layout tours north of Ft Myers in North Port Port, Port Charlotte, and Englewood. If you're arriving from the north, you can catch these on your way. If you're coming from the south, add about 1 hour each way from Ft Myers to visit these.**



Friday, Feb 18, 2022 (Continued from Previous Page)

- At 5:30PM, we board the Murder Mystery Dinner Train which includes a fine dining experience while the murder drama unfolds. We will have a special dinner and enjoy “Murder Without a Clue”. See if you can figure out “who done it.”



Saturday, Feb 19, 2022:

- Three FGRS layout tours in Ft Myers area in the morning plus a visit to the “Scale Rails” model railroad club’s fine scale HO and HOOn3 layout in full operation.



Saturday, Feb 19, 2022, (Continued from Previous Page)

- Visit Shellpoint Railroad which has a fine HO layout modeled after the state of Florida



- Visit Railroad Museum of South Florida, including a 7 ½ inch gauge train ride around a beautiful park, through scenes of old Florida and across bridges and through a tunnel, roaming around a natural Florida wonderland. In the museum, we will be viewing a fine scale S gauge layout, as well as a G scale railroad running around the ceiling, and other interesting railroad displays.



- Saturday night dinner will begin at 5:30PM

Sunday, Feb 20, 2022: Swap Meet and Tour Edison Winter Estates/Museum



FGRS 30 YEAR EVENT REGISTRATION

This fun-filled weekend would cost you close to two hundred dollars for all events, on your own. Just the Murder Mystery Dinner train would cost \$110 per person.

And the value of fellowship with club members is priceless!

FGRS is making a very special price for all club member who have paid their dues before January 11, and have registered for the event before that date.

Your cost for the weekend, for paid-up members, will be just \$115 per person if paid by January 11, 2022. The Saturday-only package cost will be \$45 per person if paid by January 11, including dinner.

Here are the details of the two packages:

“THE ATLANTIC COAST LINE PACKAGE”: This package will include all Club layout tours, a Swap Meet at the hotel, and the Murder Mystery Dinner train on Friday. It includes all activities on Saturday - more Club layout tours, all model railroad club and museum tours, the Railroad Museum of South Florida, with a 7-1/2” gauge train ride, and dinner. On Sunday, it includes the Edison and Ford Winter estates and Museum tour, and the more of the FGRS swap meet at the hotel.

- \$115 per person if paid by January 11; \$130 per person after that.

“THE ORANGE BLOSSOM SPECIAL”: This for all events on Saturday only. It includes all FGRS layout tours (Friday and Saturday), all model railroad tours, the Railroad Museum of South Florida, 7-1/2” gauge train ride, and dinner Saturday evening.

- The Saturday-only package cost will be \$45 per person if paid by January 11; \$50 per person after that.

So there are three things to do:

Pay your 2022 dues.

Make your Hotel Reservation (if you are staying overnight at the hotel).

Complete and mail in your FGRS 30TH ANNIVERSARY Reservation Form, on next page.

More information to come, so keep reading the newsletters or special emails. Any questions please call me 410-310-6001

Thank you!

- Fred Weber

FGRS President

**FGRS REGISTRATION FORM FOR 30TH ANNIVERSARY
FEBRUARY 18,19, & 20 2022**

PLEASE PRINT ALL INFORMATION

NAME: _____

SPOUSE: _____

ADDRESS: _____

PHONE #: _____

ATLANTIC COAST LINE PACKAGE

EARLY BIRD SPECIAL BEFORE January 11,2022

Single package \$115 Check Here _____ Couple package \$230 Check Here _____

Starting January 12, 2022

Single package \$130 Check Here _____ Couple package \$260 Check Here _____

ORANGE BLOSSOM SPECIAL

EARLY BIRD SPECIAL BEFORE JANUARY 11,2022

Single package \$45 Check Here _____ Couple package \$90 Check Here _____

STARTING JANUARY 12,2022

Single package \$50 Check Here _____ Couple package \$100 Check Here _____

Send Check made out to Florida Garden Railway Society with Form To:

Fred Weber

7686 E Oak Forest St, Floral City, FL 34436

VERY IMPORTANT NOTICE

UPDATE ABOUT THE HOTEL IN FT MYERS FOR FGRS 30 YEAR ANNIVERSARY

Due to the condition of the Holiday Inn in Ft Myers and reviews of people staying at the hotel, we have decided to change hotels. Three of our members visited the Holiday Inn to inspect the hotel and have found it to be less than desirable.

If you have made a reservation at the Holiday Inn, you **will need to call and cancel by calling 239-332-3232.**

Our new location will be The Quality Inn Suites, Fort Myers I 75, located at 13651 Indian Paint Lane, Ft Myers, FL 33912. The phone number to make reservations is **239-768-0005**. The up-front cost of the room will be \$179 per night for a Double Queen Room and \$189 per night for a Single King Room with Sleeper Sofa. We are working out an arrangement to give you a credit of up to \$20 per night on your room which will be applied to your bill at check out, reducing your hotel bill substantially at that time. When making your reservation, please remember to mention that you are with the Florida Garden Railway Society (FGRS) in order to secure one of the rooms that are being held for the club, and to claim your credit at checkout. Please keep in mind that it will be Baseball Spring Training and rooms will be booking quickly, so please make your reservations as soon as possible.

We are looking forward to an exciting weekend and wouldn't want you to miss out on any of the scheduled events.

- *Fred Weber*

FGRS President

The Lemonade Stand

Overcoming the Mistakes We Make in Model Railroading

by Jennifer Nisenoff and Tim Smith



Most articles produced for this newsletter illustrate the triumphs of our members. We can learn much from the successes of others. The Lemonade Stand is here to help us find ways to learn from the mistakes we often make as we begin or return to this wonderful hobby. Each Lemonade Stand article focuses on a single Lemon (i.e., problem/mistake) and (hopefully!) provides some insights to turn that lemon into Lemonade (success!). While I am a Garden-Scale modeler, these Lemons will likely apply to most any scale. I am

a history buff. I do some research online, and Jennifer and I are regular users of the Lee County library system. I try to include some little historical tidbit in each article.

This month's Lemon: Letting the perfect become the enemy of the good!

Some of us model railroaders are seemingly always on the road to perfection. It is just so human of us to want everything to be "perfect" and to be dissatisfied when things do not go perfectly. Sometimes our efforts to achieve perfection get wrecked on the rocks of reality. Some of us just declare failure and give up. If "Perfection" is our destination (even if we sometimes do NOT know where we are going!), then model railroading is one of the "funnest" (editor prefers "most fun" ...sigh) things we can do while trying to reach that goal! But there are plenty of wonderful stops on the road to perfection...and we can learn to appreciate the good things in our lives which are less than perfect.

Perfect is an ancient word...It comes from the Latin *Perfectus* which means "to finish completely through." The French word is *Parfait* and we might translate that tasty verbal morsel as "exactly right." Unfortunately, in modern America, we have come to equate perfect with flawless. We forget that often a less-than-perfect leaky bucket makes a good (dare I say "perfect?") watering can!

Backstory: Recently I was given a broken steam locomotive that was in pretty rough shape overall. It was missing the entire front end, had many broken/missing parts and was covered in dust and grime. The original owner had just come from a model train swap meet and had been unable to sell the loco for \$5 or get anyone to even take it for free. He had dropped it off as a donation to the South Florida Railroad Museum here in Fort Myers and the manager of the museum gave it to me rather than throwing it away. It had a few nice parts



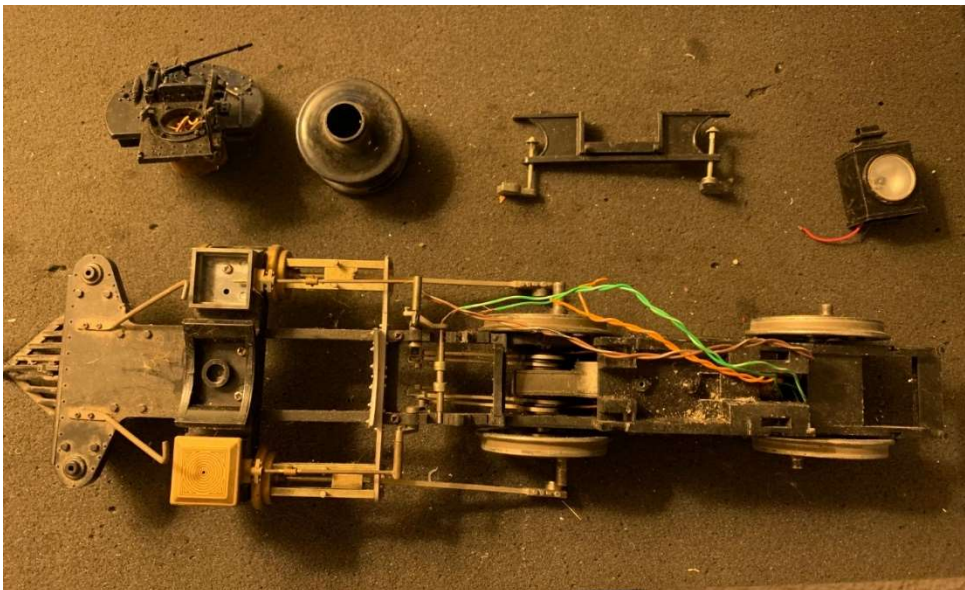
on it and I thought I might be able to strip the locomotive down, and use the nuts, bolts, and screws and other doodads to turn some of my other ventures into “usable” trains. When I got home with the locomotive, I began to search the internet to see what I actually had. After several hours, it became clear that this was once a Bachmann 4-4-0 and the parts might have some re-sale value. With all the broken plastic, missing pieces, and bent metal, this unit would never be restorable to a “perfect” model train, so maybe the parts could help some other person or project.

As I surveyed this derelict in preparation for dismantling it, I began to see things that were really interesting. This had once been a quality engine. It had a steel chassis, great detail, and many brass parts. The drive rods were a tangled mess and some were missing; but, they were metal and had once been lovely and very realistic in appearance. The cab was bashed up inside but it had once been home to a functional



reverser bar that really worked as well as a cute engineer! As I read about this online and exchanged emails with my dear friend (and mentor) Peter Thornton, I began to re-think what should be done with this old iron horse. I might be able to just leave it alone and use it at a wreck location on my (future) layout. I could put it in a (future) engine shop and show it “under repair.” I have always been a bit curious so I decided to take it apart and see what it looked like inside. I began to remove parts and carefully label them even though I was sure I would never get these bent and broken pieces back together again. After removing the remaining bent drive rods, boiler, and cab, I was left with nothing but the chassis, motor and drive wheels. There were some wires sticking out of the chassis: gnarled, dirty, and totally unmarked. All other electronics including headlight, smoker, and electronics components were gone.

I checked the continuity between the driver wheels and each remaining wire in an effort to locate



the track pick-ups but I could not be sure that any of this was even connected. Eventually, I was able to see that one pair of wires went to the cab (lighting?), one pair of wires went to the rear of the loco (sound?), and one pair was still (almost) attached to a plug which was in very poor condition (track pick-up? motor? smoke?). With my flashlight, I was able to see that

the motor leads were about the same color as the motor wires under the chassis. I snipped off the damaged plug and put a small amount of current to the plug leads and the motor immediately came to life. It ran smoothly and the rear axle of the disconnected drive wheels turned without skips. Amazingly, the loco motor and gears were still able to operate. When I put the empty chassis on my test rollers, the rear driver axle ran smoothly in both directions at all speeds with little noise. It was time to re-think this locomotive. It would never be flawless. There was too much wrong to make it look “perfect”. But it might be good and functional for a railroad that had seen its better days (just like me!).



Over the next several weeks, I was able to clean up dirty parts, get bent rods back into shape, and make replacement parts out of LEGOs and other junk plastic bits I had collected over the past two years. The boiler was repainted (matte black overcoated with clear gloss). Brass rods were shaped into various ways to make pipes, grabrails, etc. Some Bachmann parts were still available and those were procured from the Bachmann website and fitted in (see the top boiler handrail pair, for instance). Some brass parts (stack, domes, whistle, etc.) were purchased from Trackage Details in Palmdale, CA.

Repair and re-assembly featured untold undo's and restarts, several modifications, repeated failures to get things right, a dropped loco (sigh), and accepting that not everything is going to be perfect. I loved every minute of it!...except the part about the dropped loco (sigh). The entire front end—pilot, front guide truck, etc.—is a replacement from one of my numerous



spare Bachmann 4-6-0 units. The boiler support frame is made from LEGOs. New drive rods have been made by cutting and gluing (plastic) ends of used 4-6-0 drive rods together.

Now the Bachmann 4-4-0 looks sort of like the prototype engine. The model locomotive may not be a PERFECT replica of the original but it is a GOOD steamer that should serve the museum well over the coming years. Due to all the missing original wiring, a very simple wiring harness was installed. The loco drive wheels no longer pick up power. Therefore, track pick-up comes from the tender wheels. A power wire comes from the tender



and connects to the rear of the engine. That engine wire branches inside the boiler. One pair of wires branches to the loco headlight and one pair goes to the loco motor...that is it! No switches, no smoke, no mirrors, and no problems!

NOTE: The LED in the headlight is directional so the headlight only activates when the engine is going forward.

This GOOD little 4-4-0 loco runs very smoothly, looks OK, and is easy to transport and put on the tracks. As Dick Clark might have said during 'Rate-a-Record' on American Bandstand: "It has a good beat and is easy to dance to!"

This salvaged locomotive is not a "perfect" model. It is a good model now and it will see regular service at the South Florida Railroad Museum soon. Thanks to Peter Thornton's great idea, this unit now sports the markings of the Charlotte Harbor & Northern Railroad. Look for it on the G-Scale track on our museum tour coming up during the FGRS February Convention, February 18-20.

How to make Lemonade from this Lemon: Letting the perfect become the enemy of the good:

1. Remember PERFECT does not mean flawless. It does mean "ideally suited for its purpose."
2. A good model often requires less attention than a perfect model.
3. Be thankful for what we have even if it is not perfect.

Next Article: Forgetting How Lucky I Am To Be Able To Enjoy Model Railroading

From the Newsletter Desk *The Information Highway (Railway)*

Paul Wagner

Finding information about “Things you always wanted to know, but were afraid to ask.” (Just kidding - don’t be afraid to ask, the best source of information is still getting together with other garden railroaders at their layouts)



I’m frequently asked where to find information about various garden railway projects, and while I love to talk about my own experience, I recognize that there are many “right” ways to do things – be it roadbed and track construction, locomotive control systems, landscaping, and just about any of the myriad quandaries that confront us in building and operating a garden railway. I am a compulsive article reader, and find answers to many of my

questions in the pages of old Garden Railways magazines, searching back issues of our FGRS Newsletters, searching the new online magazine *Garden Railroading News*, and online forums. I’ll address some of the printed media options first, as I realize that not everyone has or likes to use a PC. If you don’t have a PC, you no doubt will want to keep a files of as many old Garden railways magazines as you closet will hold, and rip out the “Annual Index” they have, so you can search for something you may have seen before. The same for FGRS Newsletters and Garden Railroading News. You will want to keep and file printouts of back issues, although, there are no indexes for those – you will have to ask someone with a PC and who has saved back issues to do a search for you, and cue you in on where to find the article you are looking for. I will address some tips and tricks in doing searches of PC files and online searches next month.

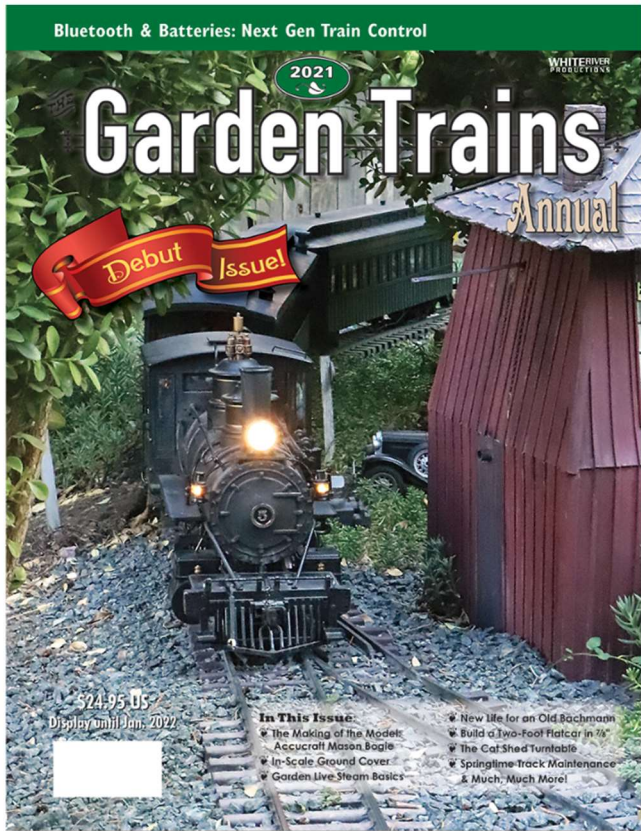
And there is another source of information that has come out this year which is a treasury of information that many of us have been waiting for: ***Garden Trains Annual***. If you read my review of this 114 page softbound book in the May issue of the FGRS Newsletter, you may recall that I am very impressed with it. As White River Productions has not publicized it, and it is not in bookstores or hobby shops around here, and it is difficult to find, even on their own website you may have overlooked it. But I still strongly recommend it for anyone interested in moving forward with a garden railroad. One article in it, worth the price of the publication alone, is a comprehensive review of the R/C battery control systems available for trains today. Anyone planning to install these systems in their locomotives, and trying to decide which of the ten popular systems is right for you should definitely own this book. And there are many other important articles in it. On the following two pages, I am reprinting my review updated with the url and phone number of a discount dealer from which to purchase it.

- PW

“GARDEN TRAINS Annual”

A review of a new Garden Railroading Publication

By Paul Wagner



When I spotted the ad for a new Garden Railroading publication, “**Garden Trains Annual**”, in the January – February “*Garden Railroading News*”, I’m thinking “Hey, the guys at GRNews.org are already giving me all the garden railroading reading I need, for free.....do I need to fork over almost twenty-five bucks plus postage for some more?.... Then I saw it is being published by White River Productions, whom I happen to know publish multiple prototype and model railroad magazines, including *Railroad Model Craftsman*, and the well-known and loved, *Narrow Gauge & Short Line Gazette*.

So I pulled the trigger, and placed my order early, and boy, am I glad I did! Within a few weeks I received, packed in a cardboard box, 116 pages of some of the most beautiful photography and useful garden railroading articles I have seen for a long time, printed on

heavy, glossy photo paper that would rival a fine coffee table historical book.

After a brief welcome by the editor, Chris Lane, the book is kicked off by our old friend from the *Garden Railways* days, Kevin Strong. He very powerfully reviews the state of the hobby for us, admitting that it’s very difficult to paint a rosy picture of the future of our hobby – but – then he goes on to say, “**So allow me to paint that rosy picture in this premier issue of the GARDEN TRAINS ANNUAL, itself a sign of the phoenix rising from the ashes.**”

And a rosy picture it is! In a five-page review of his experience in garden railroading, begun at an early age under the tutelage of his father, the late Jim Strong, he tells how his family started with moving their first LGB set outdoors in 1980, and intertwines exciting photos of their several garden railways with the story of where the hobby is going, and where it’s been. And with 30 years writing for railroad publications “from a front-row seat as the hobby grew from its infancy,” he should know. He concludes his story which includes nearly all aspects of the ups and downs of the hobby, by saying, “**I hope you will forgive me for a frighteningly optimistic outlook on the hobby.....It’s what we who love this hobby do – find a way to continue. It’s been a great ride so far, and I have no reason to expect that to change in the near future. So here’s to clear tracks ahead. Where they take us is entirely up to us.**”

And the rest of this journal certainly gives me confidence in the power of enthusiastic garden railroaders to keep garden railroading going for as long as it continues to be fun.

I list a few of the **(twenty-four!)** articles and sections here:

“A Century and a Half Back” – An article about using the Bachman 4-4-0 and other rolling stock to accurately model the Colorado railroads of the 1870’s.



“Bluetooth, R/C and Batteries” – Not just about the Bluetooth system, this is the review of all the major RC and battery systems we’ve been waiting for.

“The Spokane Division of the SP” - A large, beautiful garden railroad, with Bigboys and Daylight steam power, as well as “Black Widow” diesels pulling long trains. Great views of the mainline, along with construction photos and discussion.

“2021 Product Showcase” – New Large Scale Releases for 2021 by the GTA Staff. Peco Code 250 G Scale Track; New Dash-9 from Bachman; “Model U Print to Order” Figures; Structures; Detail parts; and more.

And Twenty More Articles written for the experienced and beginners, alike....

And you think all the G scale companies have gone out of business? Although their ads represent only 24 companies, (*Garden Railroading News* currently has 36 advertisers) many of these in GTA are advertising fine looking garden railroading products that I had not seen before.

For a preview of several of the articles go to <http://gardentrainsannual.com/>

To purchase a copy, go to

<https://www.arizonahobbies.com/garden-trains-annual-2021.html>

or phone 520-365-4050

- \$21.95 plus shipping

or

<https://shop.whiteriverproductions.com/products/gt21? pos=1& sid=fa41d84a3& ss=r>

or phone [877-787-2467](tel:877-787-2467)

- \$24.95 plus shipping

I don’t think you’ll be disappointed. I see this as a great companion to the bi-monthly *Garden Railroading News* (<https://www.grnews.org/>) to help keep our great hobby growing and garden railroaders everywhere connected. - PW



Member Train Items For Sale

Looking to buy or swap something? Send in your request- FGRS.Newsletter@gmail.com

This page has been created solely as a convenience to our members who want to buy and sell from other club members. FGRS takes no responsibility for the condition of the items or sale of items. Any transaction is completely between the buyer and seller.

Please submit items you would like to buy or sell to Paul Wagner, FGRS.Newsletter@gmail.com

Ads will be run for 2 months if they are not renewed. Please notify me when an item is sold, so it can be removed from the following newsletter. – Paul Wagner

Bob Conant has for sale:

Email - bobconant2@gmail.com

In Bradenton – Pick up at my house or will work out halfway somewhere.

Aristocraft Chessie U25B locomotive. Asking \$150. Make offer



Aristocraft Chessie Steel Caboose. Asking \$60. Make offer



(Bob Conant Items For Sale
Continued Next Page)

(Bob Conant Items For Sale Continued)

LGB No 50 Diesel Loco.
Almost new, runs super.
Asking \$100. Make offer



Hartland Black Mack,
New. Asking \$50, Make offer



(2) Aristocraft 40 foot steel boxcars,
Florida East Coast,
One Blue;
One Red (Tuscan) (Not shown).
Asking \$50 each , make offer.



USA Trains Long Wooden Caboose,
Pennsylvania, nearly new,
Asking \$60, make offer.



LGB Zillertal Bier Car
Excellent condition.
Asking \$150. Make offer



FGRS Membership Application for 2022

The Florida Garden Railway Society (FGRS) invites you to join a group of people who share a common Interest in large scale trains, both indoors and outdoors, or modules. We are a group of individuals, couples, and families who enjoy socializing with others and participating in train related activities.

Dues for 2022: \$25/YR for single or family memberships.

Annual dues includes a subscription to FGRS Newsletter, via web and email. If you cannot receive the newsletter via internet, a printed copy will be mailed to you. All renewals are due in January. If you are interested in joining FGRS, or to renew your membership, please complete this application and send a check payable to

Florida Garden Railway Society (FGRS)

Attn: Jay Archer, Florida Garden Railway Society,

P.O. BOX 2695

Dunedin, FL 34697-2695

Name: _____

Street: _____

City: _____

State: _____ Zip: _____

Phone#: _____

E-Mail: _____

Would you like your information shared with the club members (only)? Yes___ No___

Name badges are \$12 each. If mailed add \$1.00. The badge has two lines: One for your name, and the other line can have the town where you live, or the name of your railroad.

First Badge: Name: _____ Town or RR Name: _____	Second Badge: Name: _____ Town or RR Name: _____
----------------------------------------------------------	-----------------------------------------------------------