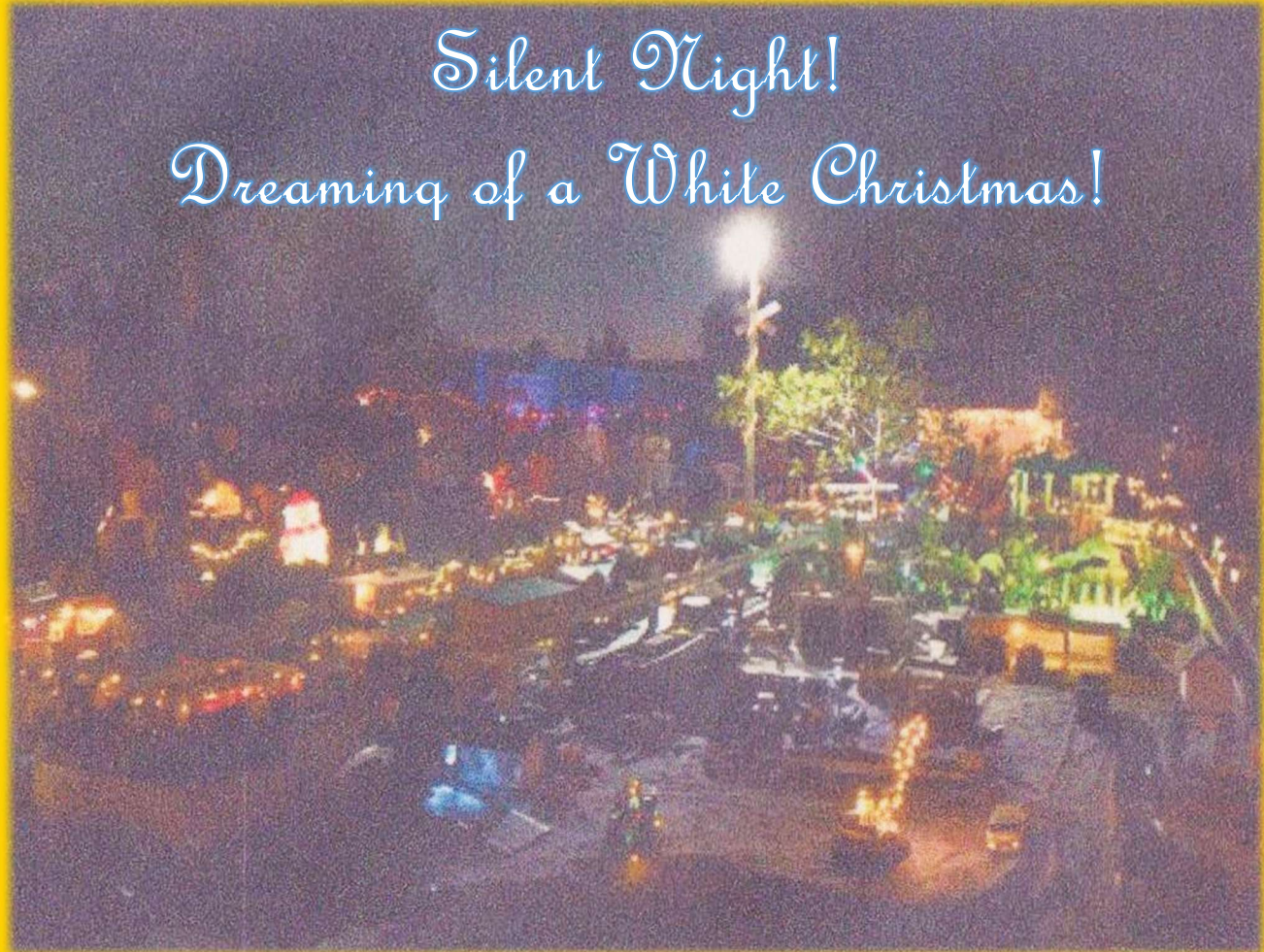




*December 2023*

**NEWSLETTER**



*Silent Night!*

*Dreaming of a White Christmas!*

*Sharing the Joy of Garden Railroading Since 1990 !*





## **PRESIDENT'S NOTES**

### **From Fred Weber**

**December 2023**

The Holidays are only a few days away from now and I hope all of you have your Christmas trains up and running. For most of us it all started with a train around the Christmas Tree.

A big THANKS to Ray Lambert for the outstanding job he did at Bushnell Station. Ray designed the Halloween and Christmas decorations around the five acres of the 7 ½ inch scale railroad. With his helpers, the lighted display is a must see. If you have not seen the display yet, come to Bushnell Station and ride the rails. They are open from 6 to 9 every Friday and Saturday night until the end of the year. Saturday hours are 10 until 4 all year long.

Coming events for the new year: Two Scottish festivals, The Deland train show, Venice Historical days, and the Baker House. Those 5 events raise half the funds to run the club every year. We do need volunteers to set up, run trains, and tear down after the shows. Time spent helping at these events will ensure a stronger FGRS club in the future.

Volunteering at Bushnell Station, Crew's Lake, and Lake Park in Ft Myers will help grow the interest in Garden railroading. You have the opportunity to run your trains on different layouts and talk with people with interest in garden railroading. I look forward to seeing more members involved in all events.

2024 will be my last year as president. The members on the board have been working hard to keep the club operating and creating events for all our members to enjoy. We need more participation from different members to continue with the success the club has had in the past. Please consider joining the board in the coming year.

One more club event, your 2024 dues are due January 1, 2024.

Merry Christmas and Happy New Year

*Fred Weber*, **FGRS President 2023**

**Please send in your dues and any changes in your info to our Membership Chairman - still just \$25!**

**Mail check to:**

**Florida Garden Railway Society (FGRS)  
Attn: Ray Lambert, Membership Chairman  
410 S Center Street  
Eustis, FL 32726**

Cover Photo: Is that snow coming down at Syd and Joanne Small's "Light Up Night" in Sebastian?!! If you look hard, you can make out a reindeer in the background – or am I dreaming?

*Photo by Syd and Joanne Small*

# FGRS 2023 BOARD MEMBERS



**FGRS President**  
**Fred Weber**  
**410-310-6001**  
**Fgrs.president@gmail.com**



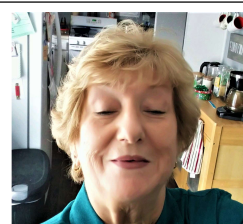
**FGRS Vice President – Eastern Region**  
**Phil Barcelona**  
**386-562-4859**  
**fgrs.vicepresident@gmail.com**



**FGRS Event Coordinator**  
**Chip Danneker**  
**214-543-5133**  
**chipdanneker@gmail.com**



**FGRS Secretary**  
**Millie Weber**  
**941-224-2996**  
**Fgrs.secretary@gmail.com**



**FGRS Treasurer**  
**Inga Thaw**  
**352-341-7799**  
**Thawwillie42@gmail.com**



**FGRS Newsletter**  
**Paul Wagner**  
**941-445-0409**  
**Fgrs.newsletter@gmail.com**



**FGRS Membership**  
**Ray Lambert**  
**954-551-3392**  
**fgrs.membership1992@gmail.com**



**FGRS Board  
 Member at Large**  
**Phil Rizzuto**  
**845-590-1624**  
**ptoytrains@aol.com**



**FGRS Board  
 Member at Large**  
**Don Carter**  
**352-207-5434**  
**doncarter521@embarqmail.com**

# 2023 TRAIN SHOWS AND SPECIAL EVENTS

## December 1 – 30, 2023 - Bushnell Holiday Express – Every Friday and Saturday 6:00 PM – 9:00 PM

AKA “The Gulf Coast and Central Florida Railroad Museum”, it is located at 6470 County Road 476 West, Bushnell, FL 33513.

Take a journey along the half-mile long “Holiday Express” and enjoy the lights and holiday characters that come to life only at this time of year. You will stop at our new pavilion along the way to enjoy a complimentary snack and beverage and view additional exhibits. FGRS will be operating our outdoor garden railway.

Donation - \$7.00 - \$12.00

***The big diesel at Bushnell Station is waiting to take you for a ride through the Christmas Wonderland; and the G scale Christmas train will be running!***



## December 2023 – Nature Coast Botanical Gardens - “Holiday in the Gardens”

1489 Parker Ave , Spring Hill, FL

The Nature Coast Botanical Gardens are decorated for the holiday season and are always open to the public. Trains are run every Saturday from 9 - noon. Everyone is welcome to come any Saturday to run their trains and enjoy the botanical gardens.

## 2024:

### January 13-14, 2024 - Florida Rail Fair – DeLand, Florida

9:00am - 4:00pm

The Volusia County Fairgrounds

FGRS will set up our large modular layout and the Kid’s Zone

*(Train Shows and Events Continued Next Page)*

*(Train Shows and Events Continued from Previous Page)*

## **EAST COAST TRAIN SHOW!**

**January 20 – 21, 2024 - Martin County Model Railroaders Annual Train Show and Sale - 10 AM – 3 PM both days**

Martin county Fairgrounds, 2616 SE Dixie Highway, Stuart, Florida

Contact Gary Hawkin - [hawkenga1@outlook.com](mailto:hawkenga1@outlook.com), phone 772-692-9017



## **2024 G-Scale Southern Regional Get-Together**

**Friday – August 23rd – Layout Tours**

**Saturday – August 24th – Vendor Hall**

**The 65th Atlanta Model Train Show • Duluth, GA**

**Sunday – August 25th – Layout Tours**

**To be a vendor or exhibitor for the 1-day 65th Atlanta Model Train Show contact Charlie Miller at [rrshows@aol.com](mailto:rrshows@aol.com) or 703-536-2954**

**Additional info coming soon to:  
GGRS.info**

## **August 23 – 25, 2024 – G-Scale Southern Regional Get-Together, Atlanta Georgia**

You may have heard that there will likely not be a National Garden Railway Convention in 2024, so the Georgia Garden Railway Society has teamed up with Charlie Miller of Golden Spike Enterprises (the force behind many of the train shows here in Florida) and will present a convention in the Atlanta area.

## **Visit Bushnell Station every Saturday from 10am - 4pm**

In addition to the special Christmas Holiday Express openings, as always, you can get your train fix by visiting Bushnell Station every Saturday as well as a RR work day on Wednesdays.

AKA “The Gulf Coast and Central Florida Railroad Museum”, it is located at 6470 County Road 476 West, Bushnell, FL 33513.

The museum is open every Saturday from 10am - 4pm. As you know, FGRS is deeply involved with the museum and has an outdoor G scale layout up and running. Feel free to bring your trains for a run. There are many layouts of all scales inside the cool air conditioned museum. Don't miss the café, serving (as Fred likes to say) the best hotdogs in the state! <https://bushnellstation.com/>

For a list of many other Train Shows go to

[http://www.railserve.com/events/train\\_shows.html](http://www.railserve.com/events/train_shows.html)



## Lite-Up Night - December 6, 2023 At the Home of Syd & Joanne Small Sebastian, Florida

This year, once again, Syd and Joanne had their "Christmas Lite Up Evening" at the Whispering Palms Railway in Sebastian. Mrs. Claus and Santa and two neighboring Elves were in attendance.

Joanne wrote:

"It was cold outside and the wind was chilly , but that just set the stage . We served over 200 hot chocolates and there were many more who came to view the layout . We celebrated two birthdays and had many treats to enjoy. Anyone in the area, please come and visit. If you notify us ahead of time we will be sure to have a train running . We usually run Sunday's if anyone is in the area and missed this open house. We would be thrilled to have you visit. Come and enjoy, our gift of the season. Merry Christmas."



**Address:**  
**40 Alisa Dr., Sebastian, Florida**  
**Phone 772-361-7309 for more information**



## Don and Lenojo Carter Christmas Open House & Garden Railroad Fun Run - Ocala, Florida December 9 2023

Saturday was a good day to run trains. There were about a dozen club members present, with a total count on Saturday of about 75 guests. . We had a special guest come by on Saturday - "Santa Claus"! It was a treat for the children who were there - young and old alike!



*(Don and Lenojo Carter Christmas Open House Continues on Next Page)*



My niece Cloey was my host greeter as you came in the gate. She helped make the day enjoyable for us all.



Don ran his container train for the majority of the day. Chance, Don's son, ran the Union Pacific passenger train along the property line and we had a guest bring a live steam locomotive to run on the elevated layout. This was a treat for those who have never seen a G gauge steam engine.

Sunday was a wash out due to storm warnings but we still had a few guests come by for a short while. We had picked up all the houses and miniature people earlier in the day but we still ran the battery

powered container train for them, and I gave them a behind the scenes tour of my setup.





*(Don and Lenojo Carter Christmas Open House Continued from Previous Page)*

A new addition to the railroad this year was the rebuilding of the bridge crossing the bog. It's made of PVC trim boards and glued together with PVC cement. The main benefit of using PVC instead of wood is that it does not rot or warp, so it should be there a long time. I will do an article about building it in an upcoming Newsletter.



We're looking forward to another great year of Garden Railroading with all of you in the coming New Year!

*- Don and Lenojo Carter*

If you are interested in hosting a Fun Run contact:  
Chip Danneker – FGRS Event Chairman  
[chipdanneker@gmail.com](mailto:chipdanneker@gmail.com) 214-543-5133



# Product News

December 2023

You can download an LGB catalog of LGB's *New Items* at [https://www.lgb-trains.com/lib/catalogs/issue20-29/pubs/LGB2023\\_383062\\_NewItems\\_EN.pdf](https://www.lgb-trains.com/lib/catalogs/issue20-29/pubs/LGB2023_383062_NewItems_EN.pdf)

Bushnell Station is our LGB dealer and the President of Bushnell Station, Craig Hurst, tells us that he has three new products from LGB:

**Christmas Rail Truck #24181 List - \$360.00 Member Price - \$324.00**

**2023 Christmas Car #36023 List - \$175.00 Member Price - \$157.50**

**2023 One Time Limited Edition Christmas Car for the North American Market ONLY**

**#36923 List - \$175.00 Member Price - 157.50**

There are NO SHIPPING CHARGES when the item is picked up at Bushnell Station

You can get a complete LGB catalog when you drop into the Bushnell Station hobby shop when you come out to run trains on our layout, ride the train, and visit the museum exhibits there.

Gulf Coast and Central Florida Railroad Museum at "Bushnell Station" is at

6470 WC 476 (County Road 476 West), Bushnell, FL 33513

Phone: 352.901.0829

Cell/Text: 352.250.0905

Email: BushnellStation@gmail.com

Website: www.BushnellStation.com

**Piko-America** has new Christmas trains and accessories that are now available. Go to

[https://mcusercontent.com/aed9b664cc784383e4f42f5f2/files/f2ee3334-691f-5a05-0309-280c8d8dd134/PIKO\\_Autumn\\_G\\_News\\_2023.pdf](https://mcusercontent.com/aed9b664cc784383e4f42f5f2/files/f2ee3334-691f-5a05-0309-280c8d8dd134/PIKO_Autumn_G_News_2023.pdf)

for the Christmas items.

Their complete website is at:

<https://www.piko-america.com/pages/g-scale>

Fred Weber has 2023 Piko catalogs. Contact Fred at 410-310-6001 if you would like to arrange to pick one up.

Catalogs and tech info are also available online for free download.

**Split Jaw Products** continues to concentrate on rail clamps, bridges, turntables, track products, and new developments. In 2023 they introduced double track bridges and a 10 foot diameter curved bridge to fit the most common sectional track, and have purchased and are now producing the HR stainless steel track line. They also carry a line of custom and rare large scale trains in their "Custom Shop" department. Split Jaw Products can be purchased at Bushnell Station. Look for an announcement of new Split Jaw products including an innovative reversing unit, new bridges, and more over the next months.

<https://www.railclamp.com/>

**Bachmann Trains** is now shipping the Dash 9 Diesel Locomotives in a variety of road names. They are also shipping parts for this locomotive which should be interchangeable for the similar unit previously produced by Aristocraft. Star Hobbies and others are stocking these.

[https://shop.bachmanntrains.com/index.php?main\\_page=index&cPath=255](https://shop.bachmanntrains.com/index.php?main_page=index&cPath=255)

**USA Trains** is now shipping the 4-8-4 FEF-3 Locomotive with Sound, and some new Christmas decorated cars

<https://www.usatrains.com/>



## Kalamazoo #4 – A Tall Tale

### By Peter Thornton

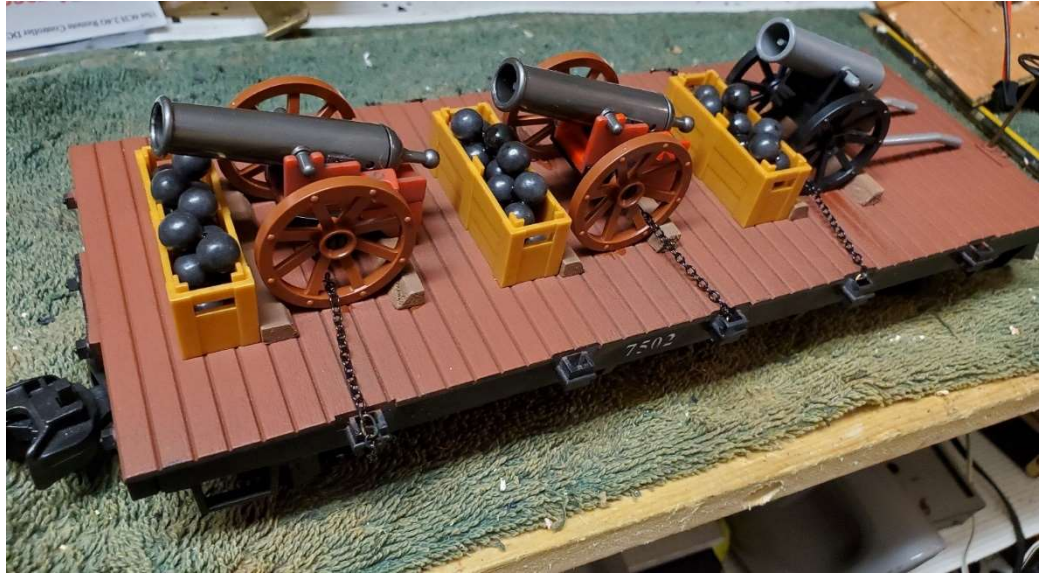
This is the saga of my adventures with Kalamazoo and Hartland 4-4-0s over the past few months. It started when I found a bunch of little flat cars with Civil War mortars and cannonballs on them, very cheap, so of course I had to buy them to make a civil war train.

In that era, locomotives were high-stepping 4-4-0s and maybe even 5' gauge in certain locales. The obvious loco to pull them is a Kalamazoo/Hartland 4-4-0,

which is a 1/24th compromise size that looks kind-of like a std gauge engine.

So I found a Kalamazoo 4-4-0 ("Kalamity-#1") in an auction with a bunch of New Bright cars. (The latter were sold to a guy on LargeScaleCentral.com.)

When I tried to make it work, I found it had a bad motor, and the plastic was brittle and bits broke in my hands. Not only that, it only had pickups on the driving wheels (as they all do,) and it was missing a headlight.



All along I had noticed that the Hartland version, made and improved after HLW bought up Kalamazoo, had nice spoked driving wheels. And lo, one turned up in an auction!

Lack of a front truck was no big deal, as I had the other Kalamity-#1 truck. So that became the primary for the Civil War train, and it was fitted with r/c+battery control (to be described later.) It ran like a champ at Jim Kottkamp's layout, along with a

wooden stock car I found and a Delton shortie boxcar.



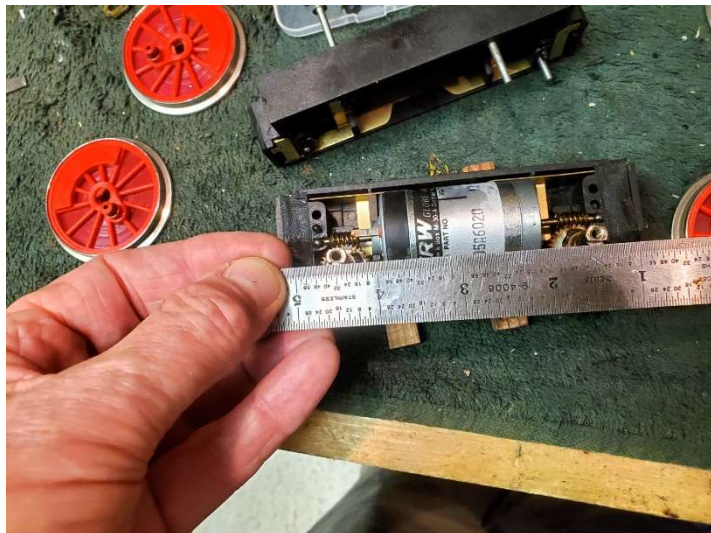


Another auction popped up (who was it told me that you can search all of Hibid for g scale? I'll shoot him!) This time locally, and they said they wouldn't ship, so I had a pleasant drive to Lewes for lunch, picking up a complete Kalamazoo Empire set for \$20.

Selling the freights paid the cost of this, so the Kalamity-#2 hit the test bed, and hardly ran. But the motor sounded like it was working, so I stripped it down. Yes the motor worked. No, the gears didn't - cracked like a Bachmann 4-4-0 (must be contagious?)



Ah, but Kalamity #1 had good gears and a bad motor, so it got taken apart again [I can strip the motor out of a Kalamazoo 4-4-0 and put it back together in 30 minutes these days!] The gears were transferred to #2, and I got a lesson in how to quarter the axles - as you take the gears out, you lose



the alignment. You have to put them back in the same place. Note on this pic the flats on the axles are being aligned, and note the nice TRW made-in-the-USA motor.

(The other thing to watch on a Kalamity 4-4-0 is that the pickup brushes and springs will fall out when you remove the wheels. You learn to be careful. . .)

Now I had a working Kalamazoo 4-4-0, but I already sorted and preferred the HLW, so Kalamity-#2 went on the block.





I had to dig another headlight out of the junk box - I think it came from an AMT "General" plastic kit. It sold in a heartbeat.

Then a bunch of TRW motors turned up in another auction (that HiBid again!) I got all three for \$15, (+buyers premium +shipping) and they all worked. One turned out to be the same type as the one in the Kalamity-#1, which doesn't

work. But it only has one end shaft and one worm. Runs fine if you only have one axle. (Old motor above, new motor in the chassis.)

While all this was going on, a gentleman on Mylargescale.com was updating a Kalamazoo 4-4-0 to make it prettier. He said he had 3 of them, 2 junked, inherited from his brother. I had asked for a junked one several months ago, thinking it might have parts I could use to get Kalamity #1 working. Shipping it from CA cost me \$40, (which was more than I paid for the other 2!) It turned up, and it had a headlight – miracles never cease. Having a spare 30 minutes this morning, I stripped out the motor block and inspected the internals.



Despite it being classed as 'junk', the motor worked fine. The I noticed - it was an LGB Buehler motor!! Appears to be the classic short-shaft, double ended LGB motor used in moguls, etc.

The gears seemed fine, so I put it all back together. I think the worms are slightly smaller than the original motor, and maybe the gears are worn, but the back end can slip and not run. Once it was





complete, with the rods keeping the wheels in sync, it ran - as well as these things run anyway. While I only got a 'junk' engine with no tender, you may notice in my first auction photo, hiding at the back, there is a green tender, which is now in my spares collection and will work with this Kalamity-#3. I know the headlight doesn't work - not only are the wires cut below the headlight but



the wires pulled out of the boiler when I took the motor block out - normally they have to be unsoldered. This loco has a hole drilled in the smokebox on the left side, which the prior owner may have done to reach the wiring. It also has the smokebox door notched top and bottom and there are a pair of small screws holding it on. There's nothing inside but a pair of loose wires that used to work the light. I ordered some new gears for the Kalamity #1 and #3, which meant taking them out so I could send a sample to Jiro Yeramian, the Facebook "Gear Man" (he cuts gears from Delrin for obsolete locos.) At the same time, I measured the gear sizes, and found the worms on the LGB/Buehler motor are the same as those on the TRW (original) motor.

Which raised the question of why the gears slip, so I gave the non-split gears on Kalamity-#3 a close inspection. I concluded that one has a groove worn in it by the worm, so it doesn't quite mesh all the time, which would make it slip occasionally.

When I get a working chassis I will probably fit it to Kalamity #1's bodywork, the first one with the bad motor. It is pretty much complete so I will be able to sell it.

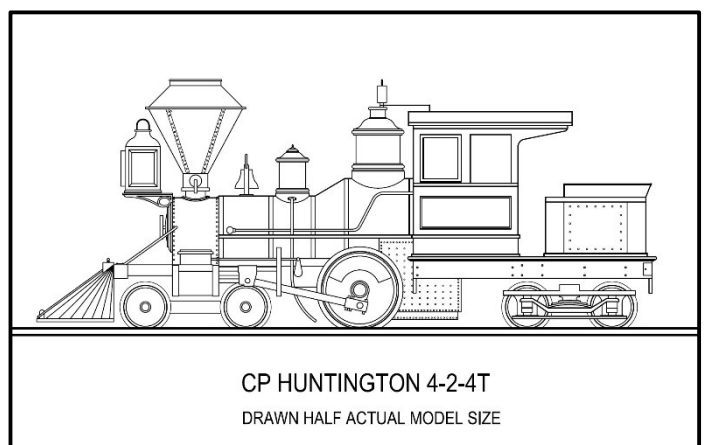
This picture on the right is Kalamity-#3, photographed so it is at the same angle as the drawing below it. . as it did occur to me that the rest of the parts might make a 4-2-4, *C.P. Huntington*! Besides, I have a working motor with one worm drive. Can't make a Kalamazoo 4-4-0 out of that. So stay tuned for this project – but don't hold your breath!

If you look in the Mylargescale Masterclass files on C.P. Huntington, David Fletcher has a good intro to C.P. including the interesting info that Delton made a 4-2-4 C.P. Huntington in brass, before they made the 4-4-0. These two engines are rather similar.

<https://www.mylargescale.com/threads/masterclasses-and-articles-index-and-downloads.20743/>

There's also a great video on Youtube of C.P. Huntington in action at the Opening of L.A.'s Union Station:

<https://youtu.be/OmOo9oKrljLI?si=evu1yWclN2YcDPOH>. Filmed by Ward Kimball, the guy who got Walt Disney interested in train, no less!





# Member Train Items For Sale

Looking to buy or swap something? Send in  
your request- [FGRS.Newsletter@gmail.com](mailto:FGRS.Newsletter@gmail.com)

*This page has been created solely as a convenience to our members who want to buy and sell from other club members. FGRS takes no responsibility for the condition of the items or sale of items. Any transaction is completely between the buyer and seller.*

*Please submit items you would like to buy or sell to Paul Wagner, [FGRS.Newsletter@gmail.com](mailto:FGRS.Newsletter@gmail.com)*

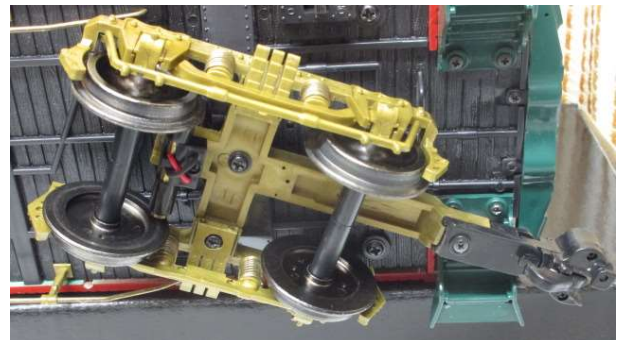
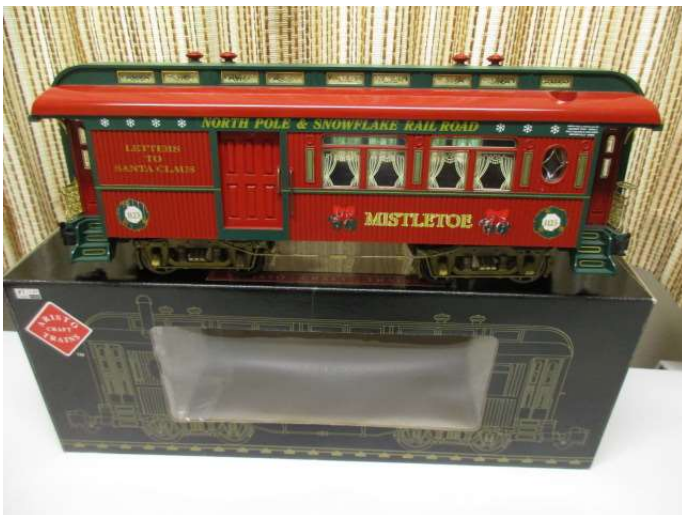
*Ads will be run for 2 months if they are not renewed. Please notify me when an item is sold, so it can be removed from the following newsletter. – Paul Wagner*

Bruce Benardo in Englewood, Florida has two Christmas train sets for sale:

I have the following Christmas train sets for sale. Both are in like new condition with very little run time and all have been updated to steel wheelsets. All have Aristo Knuckle couplers.

The first set is a Aristocraft #31025-3 Sierra Style Passenger Car set consisting of 1-combine,1-coach, and 1-observation, all lighted and have been converted to solid axle steel wheelsets , No more plastic sleeves to crack and fall apart.

Beautiful Artwork & Trim. The set retailed for \$527.00 back in 2011. Asking \$375.00. Pictures below



(Pictures of Sierra Passenger Cars Continued Next Page)



(Pictures of Sierra Passenger Cars  
Continued From Previous Page)



The second set is a Christmas Aristocraft & USAT combined Freight car Set with USAT Locomotive, Caboose, Sound car, and 7 Aristo Freight cars consisting of the following:

ART-46025 Boxcar, ART-46125 Stock, ART-46225 Reefer, ART-46325 Flat Car with Custom Load, ART-46525 Piggyback, ART-41025 Gondola with Custom Load, ART-41325 Single Dome Tank, USAT #R13018 Christmas 2000 Refrigerator Sound Car, USAT # R12158 Center Cupola Caboose, and USAT # R22040 NW-2 Diesel Locomotive





(Pictures of Christmas Freight Train Continued From Previous Page)



Also included are a couple of small boxes of add on Christmas Decorations.  
The sound car plays a medley of Christmas tunes and requires a couple of batteries to operate it. There is a switch located on the bottom of the car to activate it. The roof comes off for easy access.  
Serious Offers only and can be seen at my home in Englewood, Fl, 34223 .  
Bruce Benardo EM = Landline 941-474-2792. Leave message if machine picks up and I will call you back, or email me. [bcb1226@comcast.net](mailto:bcb1226@comcast.net)



## Don't Forget to Order Your New Shirt!

### Traditional "FGRS" Shirts

All shirts are \$35 which includes embroidering your name, taxes, and shipping to your home. The shirts are made by Core365 and are 100% Polyester – Moisture Wicking, Antimicrobial, UV protection, and easy care.

Men's shirts are available either with or without a pocket. Men's "Tall" sizes are only available without a pocket.

Color choices are True Royal (Blue) or White.

Sizes start at S,M,L,XL,2XL,3XL,4LX, and 5XL

Ladies sizes start at XS,S,M,L,XL,2XL, and 3XL

Youth sizes start at S,M,L,XL

Ladies sizes are true to size. Women who wear a men's large would need to order a ladies "extra large". These shirts are very comfortable and easy to care for. You will love them! All arrangements have been made. Order yours direct from the dealer using the form sent out in a separate document. Be sure to include your email address on the order form so they can contact you if there are questions about what you want. The order form is being sent as an additional attachment with this Newsletter and also is available on the Members page of the FGRS.org website.





## FGRS Membership Application for 2024

The Florida Garden Railway Society (FGRS) invites you to join a group of people who share a common Interest in large scale trains, both indoors and outdoors, or modules. We are a group of individuals, couples, and families who enjoy socializing with others and participating in train related activities.

**Dues for 2024: \$25/YR for single or family memberships.**

Annual dues includes a subscription to FGRS Newsletter, via web and email. If you cannot receive the newsletter via internet, a printed copy will be mailed to you. All renewals are due in January. If you are interested in joining FGRS, or to renew your membership, please complete this application and send a check payable to

**Florida Garden Railway Society (FGRS)**

**Attn: Ray Lambert, Membership Chairman**

**410 S Center Street**

**Eustis, FL 32726**

Name: \_\_\_\_\_

Street: \_\_\_\_\_

City: \_\_\_\_\_

State: \_\_\_\_\_ Zip: \_\_\_\_\_

Phone#: \_\_\_\_\_

E-Mail: \_\_\_\_\_

Would you like your information shared with the club members (only)? Yes\_\_\_ No\_\_\_

Name badges are \$15 each. If mailed add \$1.00. The badge has two lines: One for your name, and the other line can have the town where you live, or the name of your railroad.

First Badge:

Name: \_\_\_\_\_

Town or RR Name:

\_\_\_\_\_

Second Badge:

Name: \_\_\_\_\_

Town or RR Name:

\_\_\_\_\_